

P2060A P3080A

High-end CNC fiber laser tube cutting machine



The leader of new generation laser tube

- ✔ Equipped with new multi- touch CNC controller
- ✔ 3500mm- 6200mm unrestricted mixed row automatic intelligent processing
- ✔ Seamlessly docked with the intelligent manufacturing factory
- ✔ MESS cloud data management system
- ✔ It is the seventh generation flagship
- ✔ It is an ingenious product made after eight years of intensive development



Technical Parameters

Pipe diameter range: round ϕ 20mm- ϕ 220mm;
square 20mm*20mm- 140mm*140mm
Feeding size: 800mm*800mm*6200mm/800mm*800mm*8000mm
Laser power: 1500W / 2000W / 3000W / 4000W / 6000W

Max rotate speed: 160r/min
Positioning accuracy: 0.02mm
Maximum positioning speed: 120m/min
Acceleration: 1.5g

Machine Details



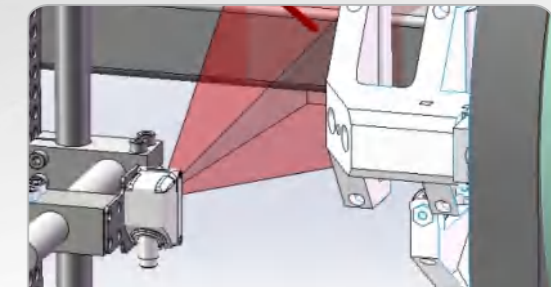
Intelligent human-computer interaction
New touch experience



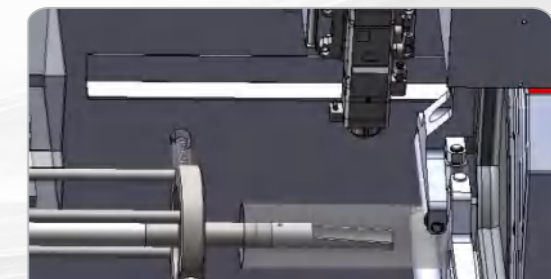
160R/MIN
High speed full stroke chuck



Spanish nesting software
Born specifically for tube



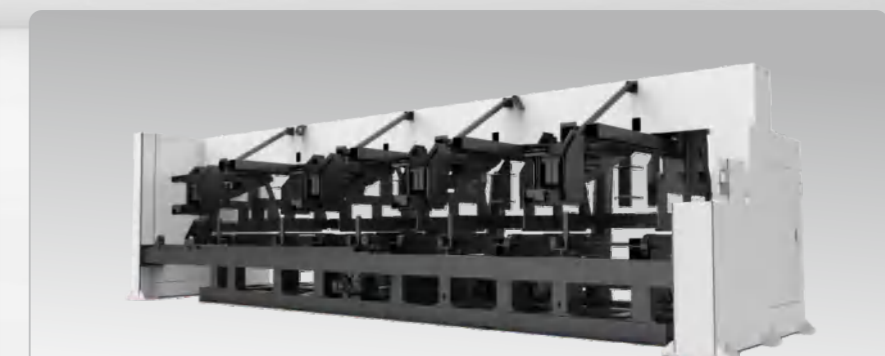
Welding detect



Automatic deslagging



Full servo dynamic support
Perfect fit all kinds of pipes



Intelligent auto loader
2.5T ϕ 20- 200mm 800×800×6200mm