



WUHAN GOLDEN LASER CO., LTD

Golden Laser Industrial Park, Tianxing Rd, Hengdian Street, Chuan long Avenue, Huangpi District, Wuhan, Hubei, China 430300

+86-27-61750109

www.goldenfiberlaser.com

info@goldenfiberlaser.com



INNOVATIVE

Metal Fabrication Laser Solution Provider

Laser Tube | Sheet Metal | Automation | Laser Robot

CONTENTS

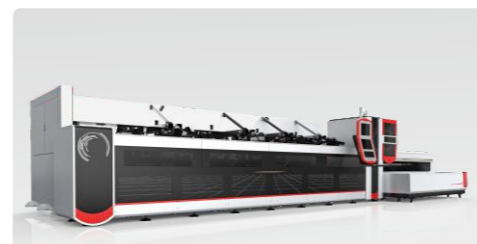


01-04

ABOUT GOLDEN LASER

- 01-02 About us
- 03-04 Brand Strength& Development Course

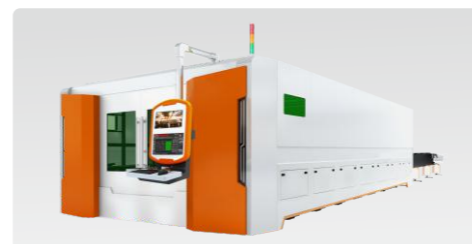
- LASER
- CUTTING
- AUTOMATION
- INTERACTION



05-24

FIBER LASER TUBE CUTTING MACHINES

- 05-06 3D 5-axis fiber laser tube cutting machine
- 07-08 High-end CNC fiber laser tube cutting machine
- 09-10 Small tube fiber laser cutting machine
- 11-12 Start off fiber laser tube cutting machine
- 13-14 Round tube fiber laser cutting machine
- 15-16 Heavy-duty fiber laser tube cutting machine
- 17-18 Shaped tube fiber laser cutting machine
- 19-22 Automated flexible production line
- 23-24 Technical parameters



25-44

FIBER LASER SHEET METAL CUTTING MACHINES

- 25-28 High-power fiber laser cutting machine
- 29-30 Medium-power fiber laser cutting machine
- 31-32 Ground rail large format fiber laser cutting machine
- 33-34 Open-type fiber laser cutting machine
- 35-36 Medium format fiber laser cutting machine
- 37-40 Small format fiber laser cutting machine
- 41-42 Sheet metal& tube fiber laser cutting machine
- 43-44 Technical parameters



45-50

THREE-DIMENSIONAL ROBOT SERIES

- 45-46 3D fiber laser cutting machine
- 47-48 3D fiber laser welding machine
- 49-50 Handheld fiber laser welding machine

51-54

TECHNICAL SUPPORT

- 51-52 Customer service
- 53-54 After-sales service



ABOUT US

01 02

Wuhan Golden Laser Co., Ltd. was established in 2005 and listed on the Shenzhen Stock Market in 2011. It is a digital technology commercial application solution provider.

The "Golden Laser Intelligent Industrial Park" project has been partially completed and is in production. It is divided into an industrial intelligent manufacturing park and a business intelligent application park, covering an actual area of more than 50,000 square meters. The industrial intelligent manufacturing park is mainly engaged in the manufacture of intelligent equipment such as lasers, automation, robots, and industrial chain supporting; the business intelligent application park is mainly engaged in the development of 3D digital technology such as Golden Laser Digital Headquarters, 3D digital display, holographic display, and various AR/VR , 3D printing, Internet platform operation, intelligent unmanned retail terminal, etc.

Golden Laser has made significant growth in the fields of metal sheet cutting, tube cutting, and laser welding. The sheet cutting series include fully enclosed exchange table series, sheet and tube Combo series, open table cutting series, and precision small-format cutting series. The tube series include automatic tube cutting series and semi-automatic tube cutting series.

Golden Laser has achieved a huge response worldwide, and its equipment is exported to more than 120 countries and regions on 5 continents. It has signed agency cooperation agreements with more than 50 countries including the United States, Germany, Britain, France, South Korea, India, Australia, South Africa, Taiwan, Hungary, Mexico, Colombia, Russia, and Spain.

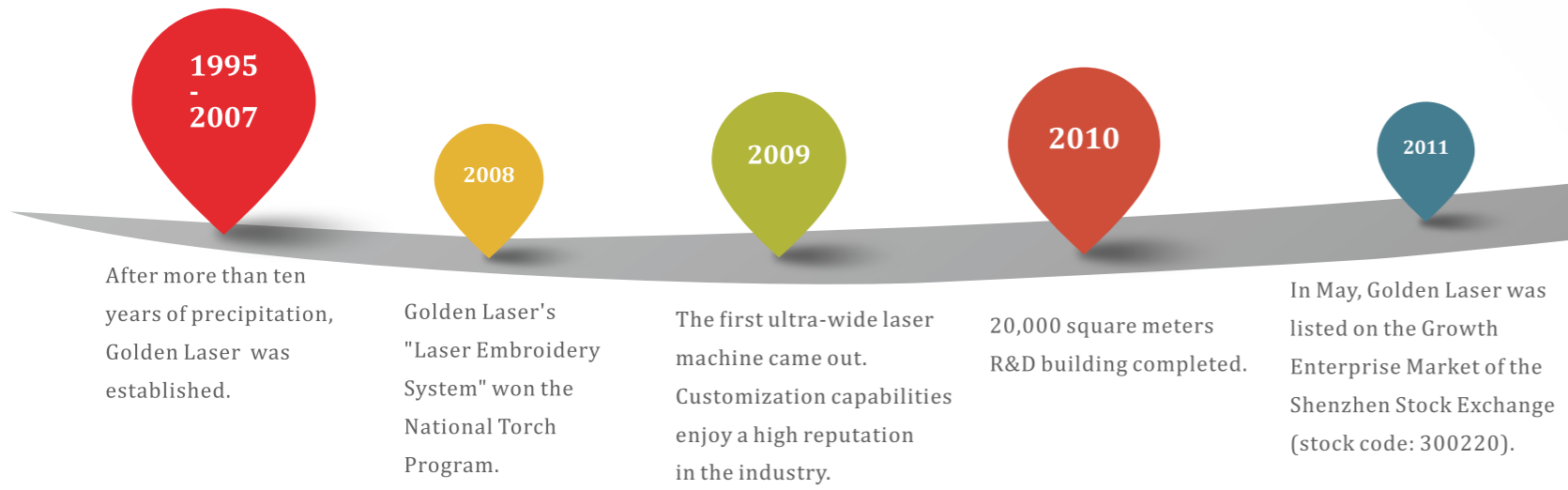
Now, Golden Laser is becoming the vanguard of subverting traditional crafts with the strength of icebreaker. Golden Laser, always on the way!

BRAND STRENGTH

HONOR

- National High-Tech Enterprise
- Famous Trademark of Hubei Province
- Hubei Provincial Enterprise Technology Center
- Undertaking unit of the National Torch Plan
- Chinese most independent innovation ability enterprise
- National Excellent Private Technology Enterprise
- First place in the Hubei Division of the 2nd "China Innovation and Entrepreneurship Competition"
- Top 5 in Hubei Division of CCTV "Model of Chinese Entrepreneurship"
- National Worker Pioneer
- "Top 20 Industrial Enterprises" in Chinese Sewing Machinery Industry
- China (Hubei) Best Corporate Citizen Growth Award
- Member of Chinese Optical Society
- Member of China Sewing Machinery Association
- Vice Chairman Unit of China 3D Printing Industry Technology Innovation Strategic Alliance
- More than 30 software copyrights
- More than 100 authorized patents
- European CE certification
- U.S. FDA certification

DEVELOPMENT COURSE



P2060A-3D

3D 5-axis

Experience the unlimited possibilities of laser tube cutting

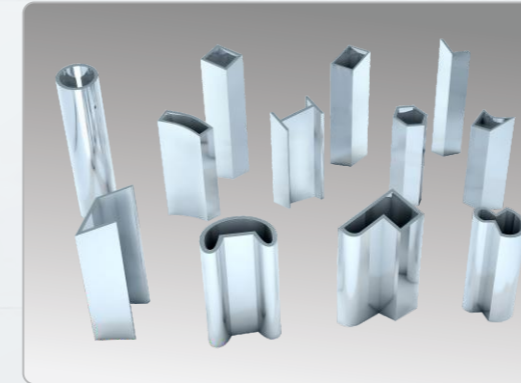


Technical Parameters

Diameter: round ϕ 20mm- ϕ 220mm;
 square 20mm*20mm- 140mm*140mm
 Weight for single tube: max 225kg (ϕ 200mm*8mm*6000mm)
 Laser power: 1500W/2000W/3000W/4000W/6000W
 Bevel angle: max \pm 45°
 Laser head: Germany LT ULTRA
 Max rotate speed: max 130r/min
 Positioning speed: 100m/min
 Acceleration: 1g



Machine Details



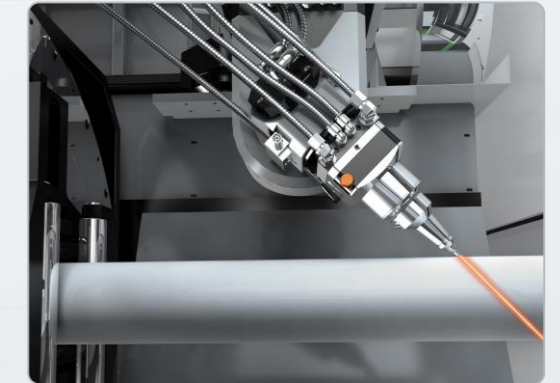
Comprehensive

A wider range of tube types can be processed, including various special-shaped tubes



Rapid cut

High-speed cutting is possible for small contours, especially thin-walled pipes, which greatly improves processing efficiency



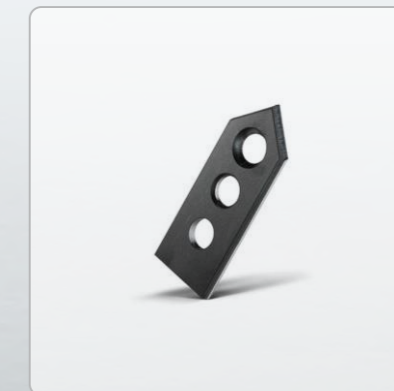
Bevel cutting

Can process up to \pm 45° bevel cutting

Reduce product costs with the advantages of laser processing

The laser's high-precision and high-speed cutting, combined with the oblique cutting of the swing head, provides unlimited possibilities for product processing. The processing accuracy is extremely high, no subsequent processing is required, and the efficiency and quality are greatly improved

Samples



P2060A P3580A

High-end CNC fiber laser tube cutting machine



The leader of new generation laser tube

- ✓ Equipped with new multi-touch CNC controller
- ✓ 3500mm- 6200mm unrestricted mixed row automatic intelligent processing
- ✓ Seamlessly docked with the intelligent manufacturing factory
- ✓ MESS cloud data management system
- ✓ It is the seventh generation flagship
- ✓ It is an ingenious product made after eight years of intensive development

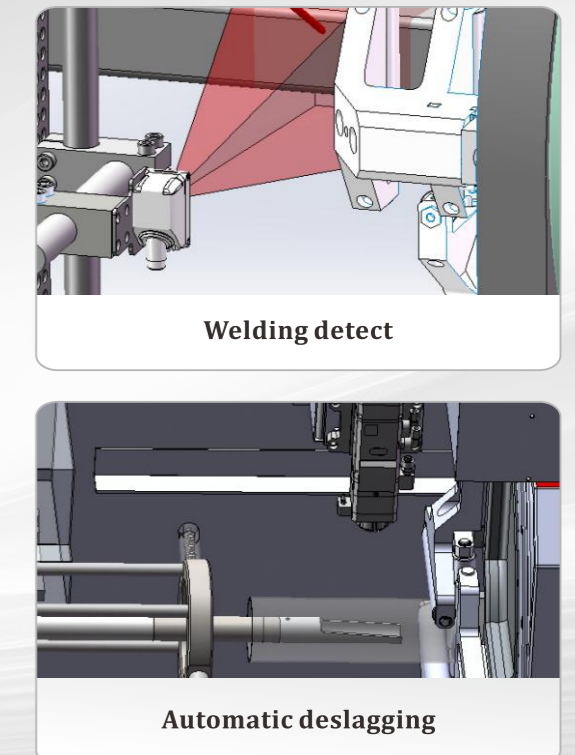


Technical Parameters

Pipe diameter range: round ϕ 20mm- ϕ 220mm;
square 20mm*20mm- 140mm*140mm
Feeding size: 800mm*800mm*6200mm/800mm*800mm*8000mm
Laser power: 1500W / 2000W / 3000W / 4000W / 6000W

Max rotate speed:130r/min
Positioning accuracy: 0.05mm
Maximum positioning speed:120m/min
Acceleration: 1.5g

Machine Details



P1260A

Small tube fiber laser cutting machine



Small size solves big problems

- ✔ Perfectly solve the processing of tubes less than 100mm dia
- ✔ Original automatic feeding and distributing system
- ✔ Speed- always one step faster
- ✔ Accuracy- always better than others

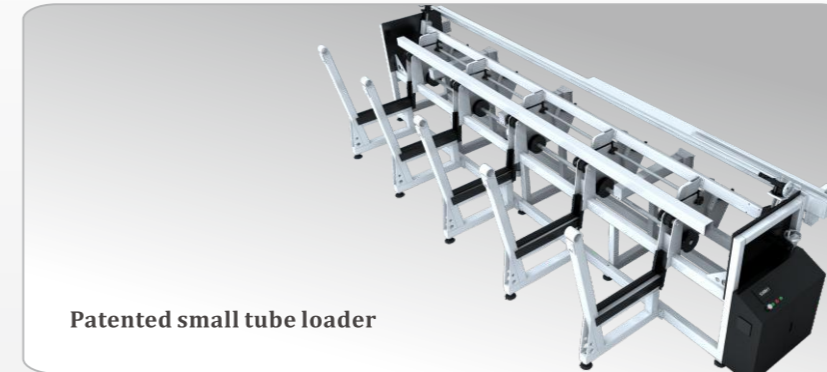


Technical Parameters

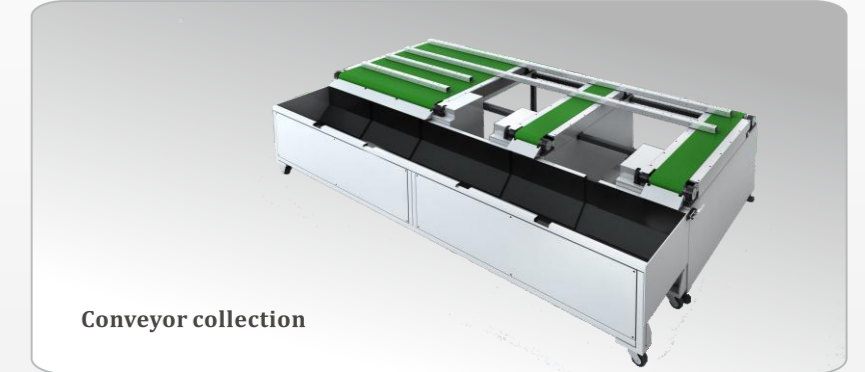
Pipe diameter range: round ϕ 20mm- ϕ 120mm;
 square 20mm*20mm- 80mm*80mm
 Feeding size: 800mm*800mm*6200mm
 Laser power: 1500W/2000W/3000W/4000W

Max position speed: X axis 150m/min, Y axis 150m/min
 Max rotate speed: 150r/min
 Positioning accuracy: 0.05mm
 Acceleration: 1g

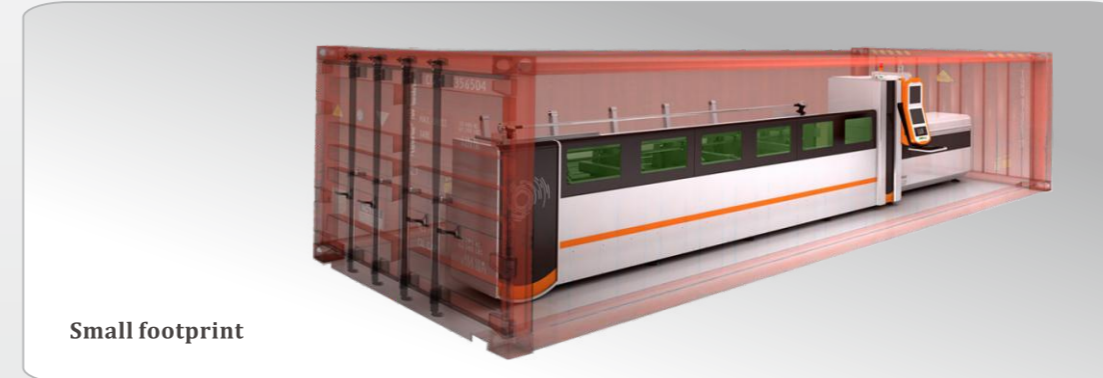
Machine Details



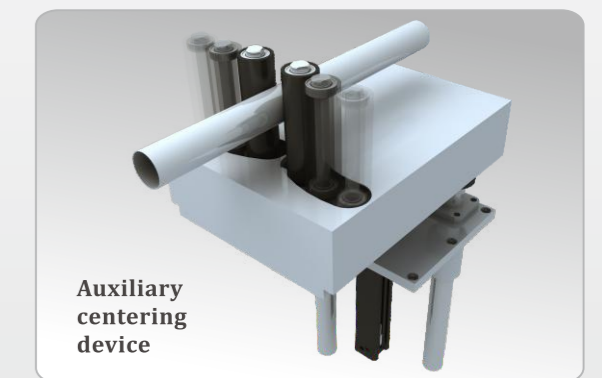
Patented small tube loader



Conveyor collection



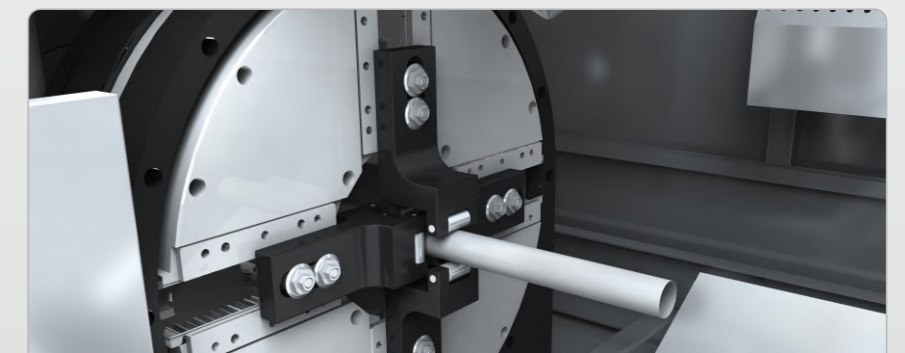
Small footprint



Auxiliary centering device



Full servo dynamic support
Perfect fit all kinds of pipes



Double row of jaws
Guarantee of accuracy

P1660B P2060B

Start off fiber laser tube cutting machine

Low investment, high return

- ✓ large plate welding bed is stable and durable for more than ten years
- ✓ 1 machine > 3 sawing machines + 2 punching machines
- ✓ It's the best entry-level industry processing tool

Technical Parameters

Pipe diameter range: round ϕ 10mm- ϕ 160mm ;
square 10mm*10mm-110mm*110mm
round ϕ 10mm- ϕ 200mm ;
square 10mm*10mm-140mm*140mm

Laser power: 1500W/2000W/3000W

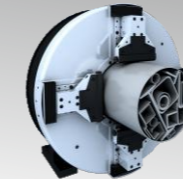
Max rotate speed: 130r/min

Positioning accuracy: 0.05mm

Max positioning speed: 80m/min

Acceleration: 0.7g

Machine Details



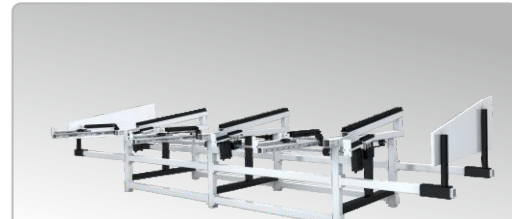
Flexible matching
of various tube types



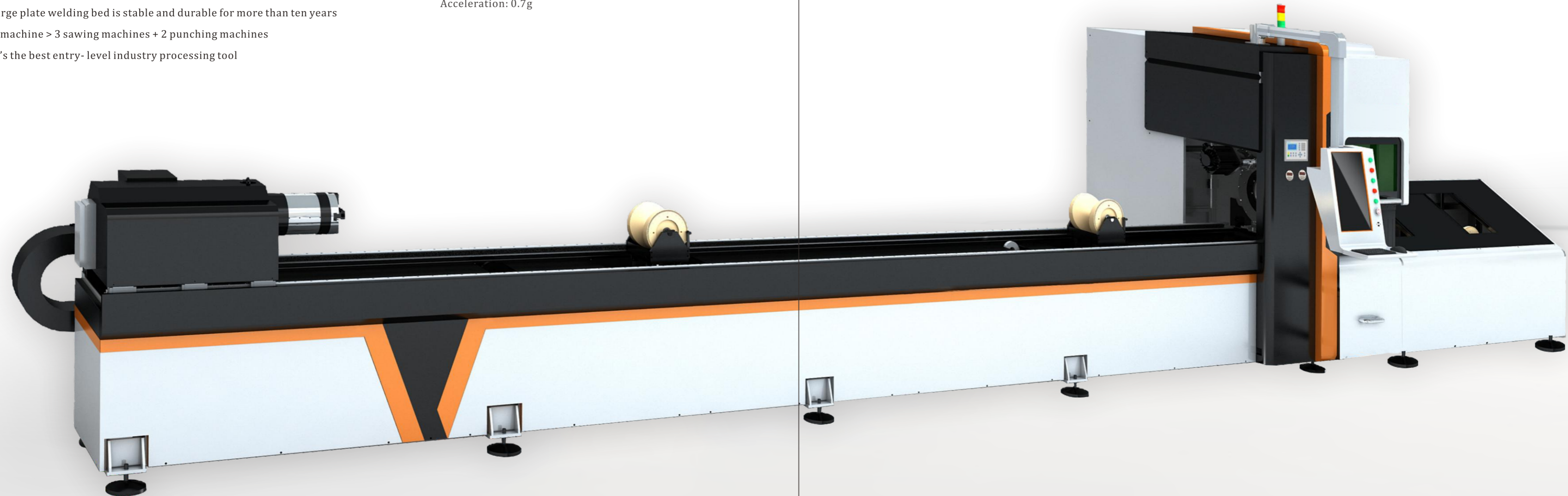
Digital bus control system



User-friendly console



Simple Loader (optional)



P120

Round tube fiber laser cutting machine

Industry Application

Auto parts, metal bathroom, hardware, stainless steel daily necessities, strollers, etc

Designed for round tubes

- ✓ Replace sawing machine blanking
- ✓ High efficiency, energy saving, pollution-free
- ✓ Standard equipped with automatic feeder
- ✓ Fully automatic processing saves manpower



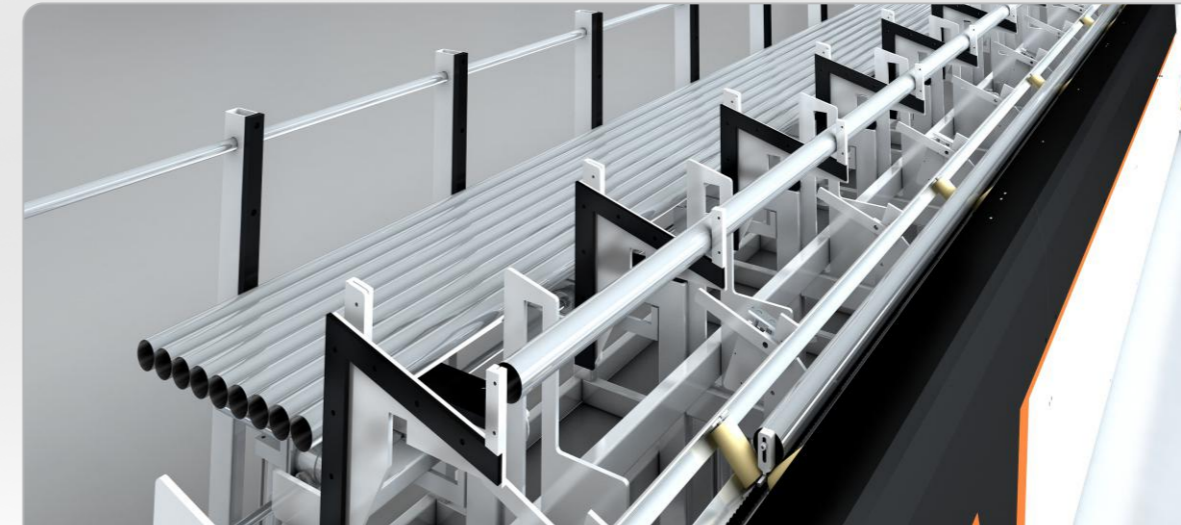
Technical Parameters

Pipe diameter range: Round ϕ 10mm- ϕ 200mm
Max feeding range: 2000mm- 6200mm
Laser power: 1000W/1500W/2000W/3000W
Max rotate speed: 80r/min

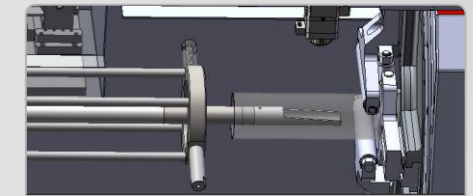
Positioning accuracy: 0.05mm
Repeat positioning accuracy: 0.03mm
Max positioning speed: 60m/min
Acceleration: 0.8g

Machine Details

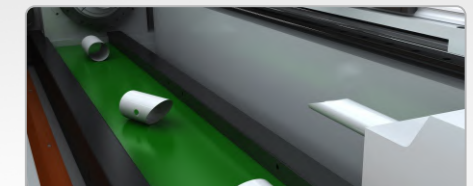
13 14



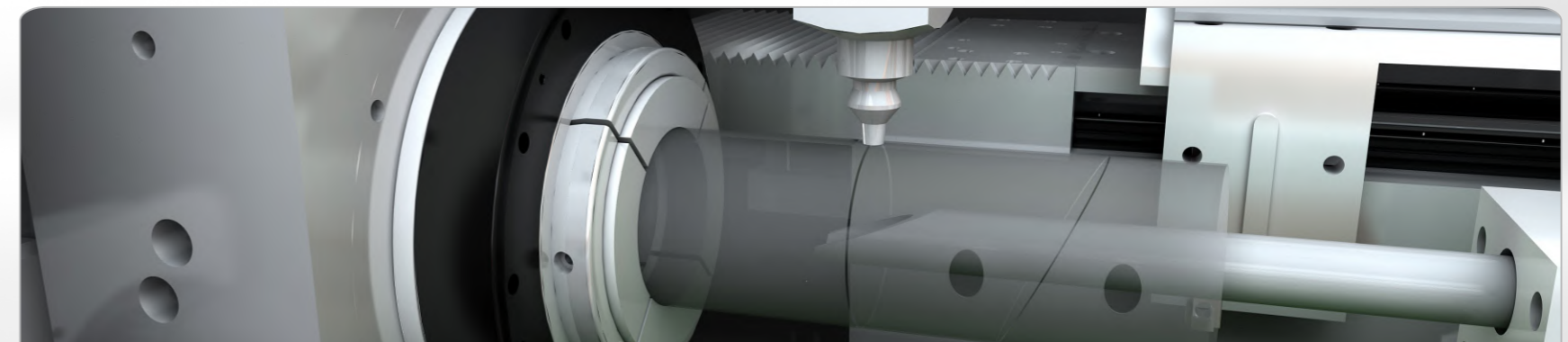
Batch round pipe
auto loading



Auto deslagging
part formed at one time without subsequent processing



Track collection
realizing continuous and uninterrupted processing



Bevel, punch, cut off
Multifunctional cutting, not just cutting

P35120

Heavy-duty fiber laser tube cutting machine

- ✔ Specially designed for the processing characteristics of heavy pipes
- ✔ Equipped with chain drive for loading and unloading
- ✔ The length of the processed pipe is up to 12m, 1200kg load



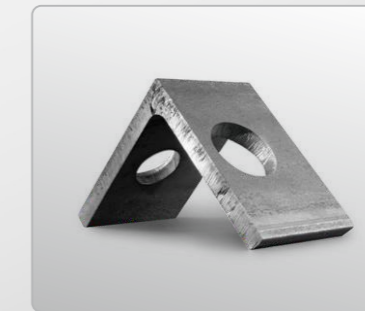
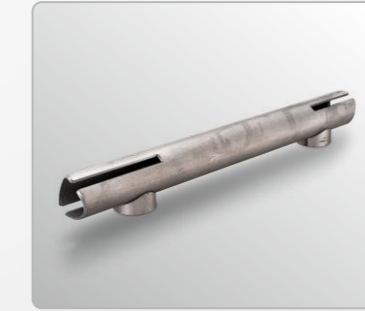
Industry Application

Widely used in heavy industry, building structural steel, oil pipelines, engineering machinery, steel buildings, street lights, etc.

Technical Parameters

Diameter: 50mm- 350mm
Weight for single tube: max 1200kg ($\phi 350\text{mm} \times 10\text{mm} \times 12000\text{mm}$)
Laser power: 3000W/4000W/6000W/8000W
Tail length: 0
Load weight: max 4.5t
Max rotate speed: max 75r/min
Positioning speed: max 60m/min
Positioning accuracy: 0.1mm/10m
Acceleration: 0.8g

Samples



T2000

Shaped tube fiber laser cutting machine

Formed pipe cutting solutions:
to cut fixed length for pipes

Industry Application

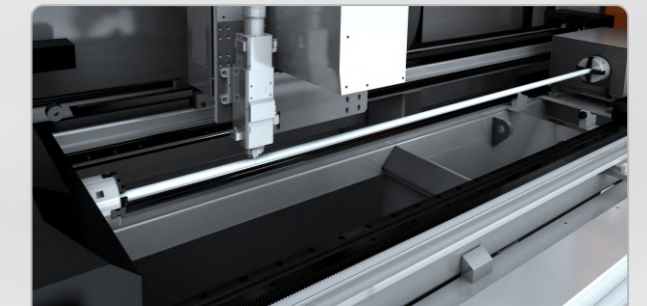
Metal carts, outdoor tents, umbrellas, display racks,
metal joints.

Technical Parameters

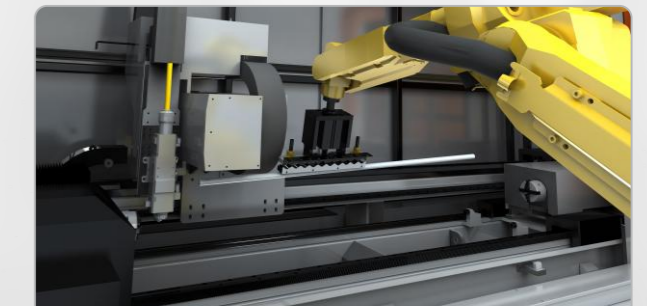
Pipe diameter range: 20mm- 100mm
Max weight for single tube: 20kg
Laser power: 1500W/2000W/3000W/4000W
Max positioning speed: X axis 20m/min, Y axis 90m/min
Max rotate speed: 120r/min
Positioning accuracy: 0.05mm
Acceleration: 0.8g



Machine Details



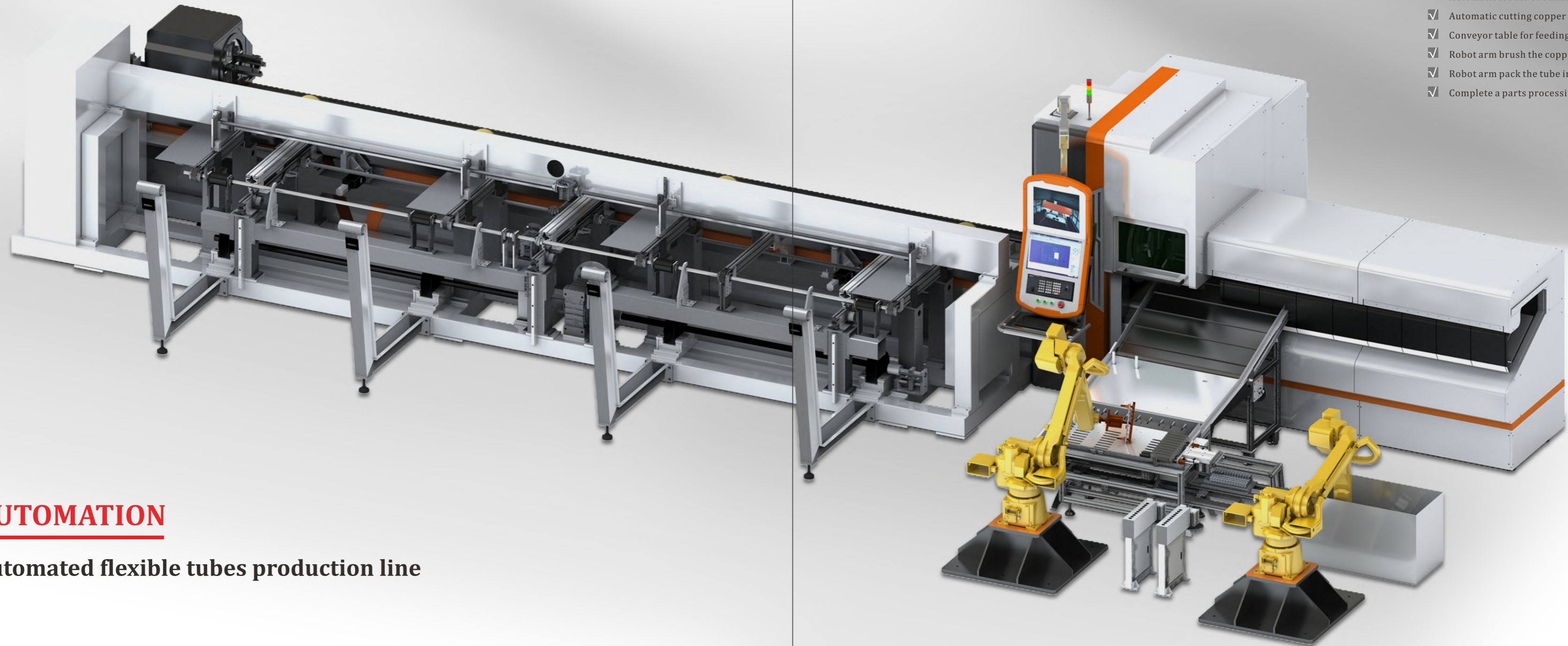
Double chuck clamping
stable and high precision



Automatic loading and unloading with
integrated manipulator

AUTOMATION

Automated flexible tubes production line



Typical Solution I

Food industry for cooper tube

Automated processing flow:

- ✓ Automatic loader of bundles of copper tubes
- ✓ Automatic cutting copper tube
- ✓ Conveyor table for feeding
- ✓ Robot arm brush the copper tube dust
- ✓ Robot arm pack the tube in the box
- ✓ Complete a parts processing

AUTOMATION

Automated flexible tubes production line

Typical Solution II

Automobile industry production

Automated processing flow:

- ※ Bundle round pipe loading or robot loading
- ※ Automatic cutting
- ※ Robot grabs the pipe to the punching machine
- ※ Punching groove
- ※ Robot grabs the pipe to the bending machine
- ※ Pipe bending machine bends
- ※ Robot grabs the pipe to the platform
- ※ Robot automatically cuts the hole on the curved part
- ※ Finished workpieces.



Technical parameters of fiber laser tube cutting series

NO.	Name	3D 5-axis pipe cutting machine	High-end CNC fiber laser tube cutting machine	Small tube fiber laser tube cutting machine
1	Model	P2060A-3D	P2060A/P3580A	P1260A
2	Processing pipe section size range	Round ϕ 20mm- ϕ 220mm Square20mm*20mm-140mm*140mm	Round ϕ 20mm- ϕ 220mm Square20mm*20mm-140mm*140mm	Round ϕ 20mm- ϕ 120mm Square20mm*20mm-80mm*80mm
3	Laser power	1500W-6000W	1500W-6000W	1500W-4000W
4	Max acceleration	1.0g	1.5g	1.0g
5	Repeat positioning accuracy	0.03mm	0.03mm	0.03mm
6	Positioning accuracy	0.05mm	0.05mm	0.05mm
7	XY Axis positioning speed	100m/min	120m/min	X axis150m/min, Y axis120m/min
8	Max rotate speed	130r/min	130r/min	150r/min
9	Max weight for single tube	225kg(ϕ 200mm*8mm*6000mm)	225kg(ϕ 200mm*8mm*6000mm)	85kg(ϕ 120mm*5mm*6000mm)
10	Waste length	① When the front and rear chuck clamp the pipe at the same time, the tail material is 180mm; ② When the current card is opened and only the rear chuck is used to clamp the tube, the tail material is 80mm.	① When the front and rear chuck clamp the pipe at the same time, the tail material is 180mm; ② When the current card is opened and only the rear chuck is used to clamp the tube, the tail material is 80mm.	Within 80mm
11	Laser cutting head	LTULTRA/RAYTOOLS/PRECITEC	RAYTOOLS/PRECITEC	Osprey/RAYTOOLS
12	Cutting system	PA BUS	PA BUS	FSCUT BUS/PA BUS
13	Nesting software	LANTEK	LANTEK	LANTEK/TubesT
14	Loader	Standard auto loader	Standard auto loader	Standard small tube special loader
15	Max load for loader	2.5t	2.5t	2t
16	Support system	Auxiliary centering + floating support	Auxiliary centering + floating support	Servo swing lever support
17	Receiving system	Floating support	Floating support	Servo floating plate support
18	Power supply	AC 380V 50/60Hz	AC 380V 50/60Hz	AC 380V 50/60Hz
19	Chuck	Pneumatic chuck	Pneumatic chuck	Pneumatic chuck
20	Servo motor	Yaskawa Bus Motor	Yaskawa Bus Motor	Delta/Yaskawa
21	Reducer	German INNOWELLE	German INNOWELLE	German INNOWELLE
22	Rack	Taiwan YYC	Taiwan YYC	Taiwan YYC
23	Linear guide	Taiwan HIWIN	Taiwan HIWIN	Taiwan HIWIN
24	Pneumatic configuration	Standard three gas sources and double compressed gas lines	Standard three gas sources and double compressed gas lines	Standard three gas sources and double compressed gas lines

NO.	Name	Universal fiber laser tube cutting machine	Round tube fiber laser cutting machine	Heavy-duty fiber laser pipe cutting machine	Shaped tube fiber laser cutting machine
1	Model	P1660B/P2060B	P120	P35120	T2000
2	Processing pipe section size range	Round ϕ 10mm- ϕ 160mm ; Square 10mm*10mm-110mm*110mm round ϕ 10mm- ϕ 200mm ; square 10mm*10mm-140mm*140mm	Round ϕ 20mm- ϕ 120mm	50mm-350mm	20mm-100mm
3	Laser power	1500W-3000W	1000W-3000W	3000W-8000W	1500W-4000W
4	Max acceleration	0.7g	0.8g	0.8g	0.8g
5	Repeat positioning accuracy	0.03mm	0.03mm	0.08mm/10m	0.03mm
6	Positioning accuracy	0.05mm	0.05mm	0.1mm/10m	0.05mm
7	XY Axis positioning speed	80m/min	60m/min	60m/min	X axis 20m/min, Y axis90m/min
8	Max rotate speed	130r/min	80r/min	75r/min	120r/min
9	Max weight for single tube	225kg(ϕ 200mm*8mm*6000mm)	25kg	1200kg (ϕ 350mm*10mm*12000mm)	20kg
10	Waste length	① When the front and rear chuck clamp the pipe at the same time, the tail material is 180mm; (single row of jaws) ② When the current card is open and only the rear chuck is used to clamp the tube, the tail material is 80mm; ③ Double-row jaws can be selected; the tail material is 50mm longer on the basis of single-row	80mm	0	/
11	Laser cutting head	WSX/RAYTOOLS	RAYTOOLS	RAYTOOLS	RAYTOOLS
12	Cutting system	Standard FSCUT3000S system; optional FSCUT5000B BUS	WEIHONG	FSCUT BUS/PA BUS	FSCUT BUS/AheadTechs
13	Nesting software	Standard TubesT 3D nesting software	/	LANTEK	/
14	Loader	Optional simple loader	Standard round tube auto loader	Seni-Auto	/
15	Max load for loader	1t	0.6t	4.5t	/
16	Support system	Variable diameter wheel support	Manually set	Variable diameter wheel support/floating roller support	/
17	Receiving system	Variable diameter wheel support	Manually set	Variable diameter wheel support/floating roller support	/
18	Power supply	AC 380V 50/60Hz	AC 380V 50/60Hz	AC 380V 50/60Hz	AC 380V 50/60HZ
19	Chuck	Pneumatic chuck	Pneumatic chuck	Heavy Duty Chuck	BK160
20	Servo motor	Delta	WEIHONG	Yaskawa	Yaskawa/Panasonic
21	Reducer	TECHMECH/ German INNOWELLE	Made in China	Desboer	Delta/MOTOVARIO/APEX
22	Rack	Taiwan YYC	Taiwan YYC/JT	Taiwan YYC	Taiwan YYC
23	Linear guide	Taiwan HIWIN	Taiwan HIWIN	Taiwan HIWIN	Taiwan HIWIN
24	Pneumatic configuration	Standard air lines; Optional three gas sources and double compressed gas lines	Standard three gas sources and double compressed gas lines	Standard three gas sources and double compressed gas lines	Standard three gas sources and double compressed gas lines

HIGH POWER



Laser power: 10000W- 30000W
Max moving speed: 160m/min
Acceleration speed: 2.0g

Model type:

GF1530JH
GF2040JH
GF2060JH
GF2560JH
GF2580JH

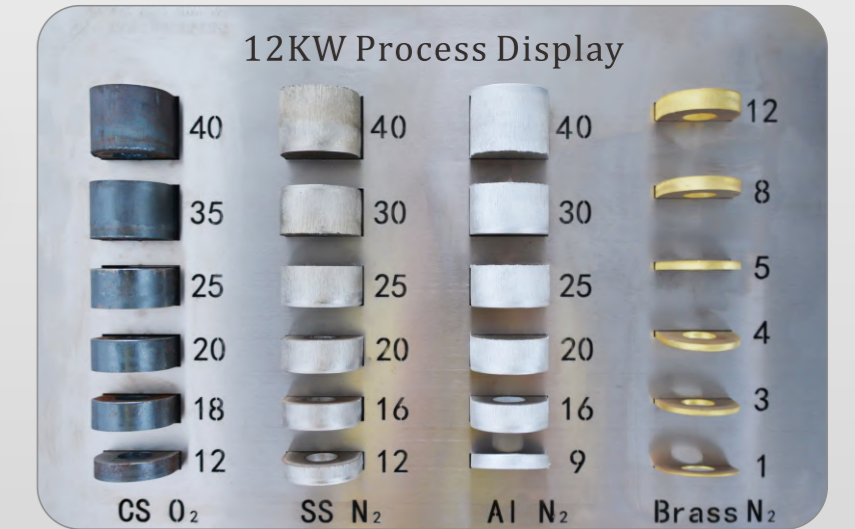
25 26

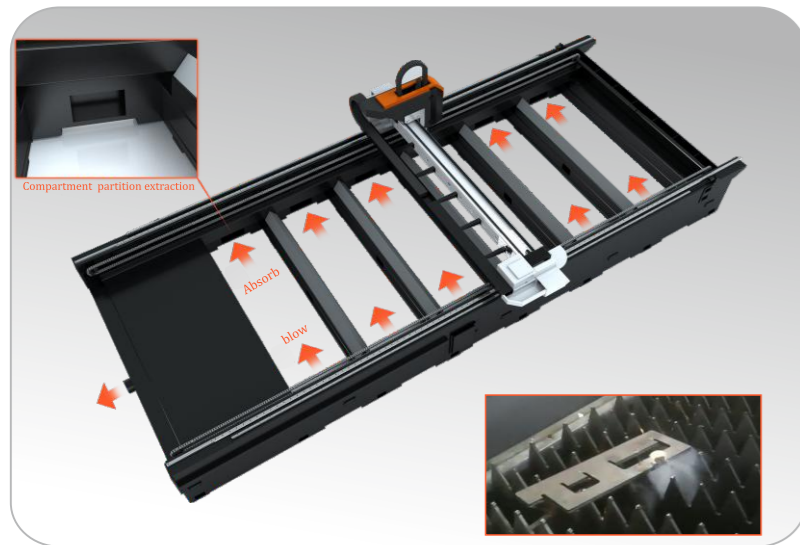


Main Features

- ✓ New CNC Laser BUS Control software
- ✓ Intelligent Bus laser cutting head
- ✓ Enrich plate processing technology library
- ✓ Heavy high- strength bed
- ✓ Independent partition dust extraction
- ✓ Super powerful driven tables
- ✓ Aviation aluminum beam

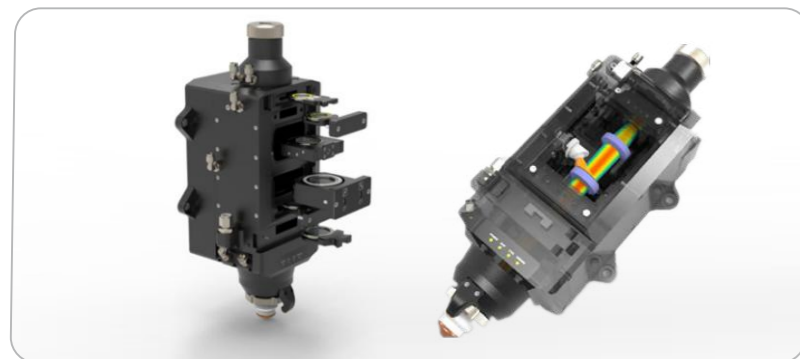
Samples





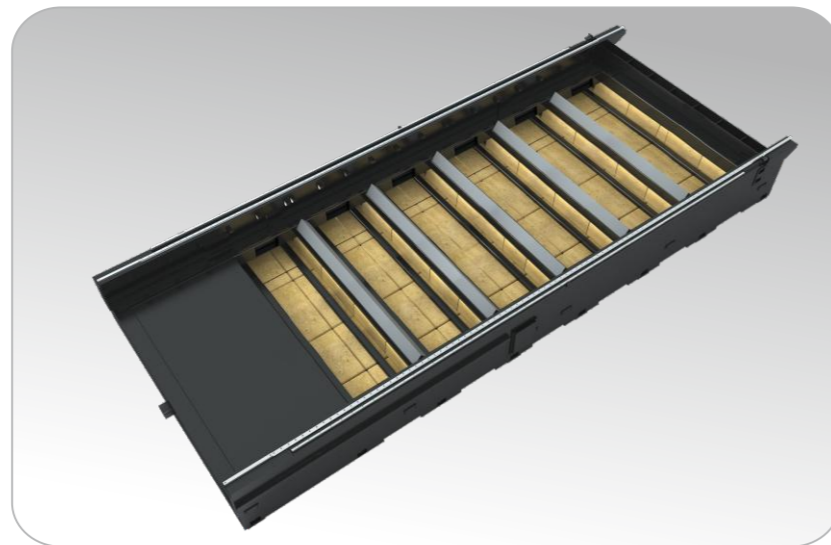
Independent Partition Dust Extraction

Adopt the built-in exhaust pipe system: avoiding the smoking pollution, ensuring safety and environmental friendly; Strong suction and dust removal can effectively prolong the lifetime of machine parts.



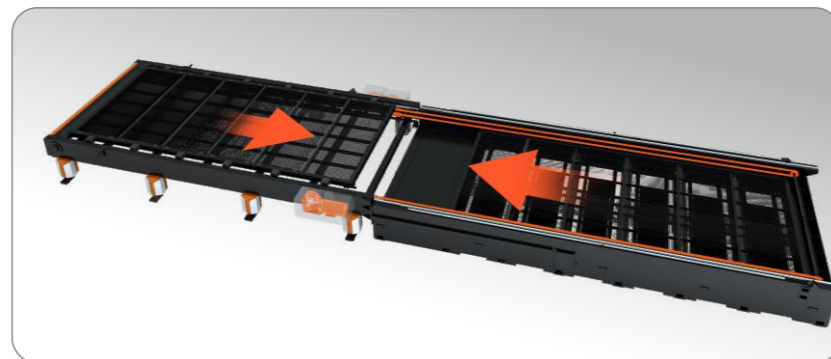
Intelligent Bus Laser Cutting Head

With the advantage of convenient installation, simple debugging, excellent performance, adapting ultra-precision, ultra-smooth lens processing technology, highly sealed, dustproof and waterproof, to achieve long-term reliable and stable operation in the daily industrial environment.



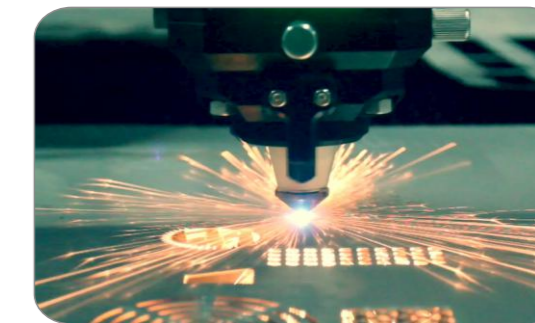
Heavy High-strength Bed

The machine body is made of high-strength full-thickness steel plate welding, the tensile capacity is better. Heavy duty bed has small mechanical vibration and good resistance to ensure cutting precision. At the bottom of the bed, the graphite layer is added to reduce the deformation during heating, prolong the lifetime of the machine bed.



Super Powerful Driven Exchange Table

Equipment exchange tables adopt bilateral high power motor drives, which can support overweight plates, ensure exchange synchronization is high.

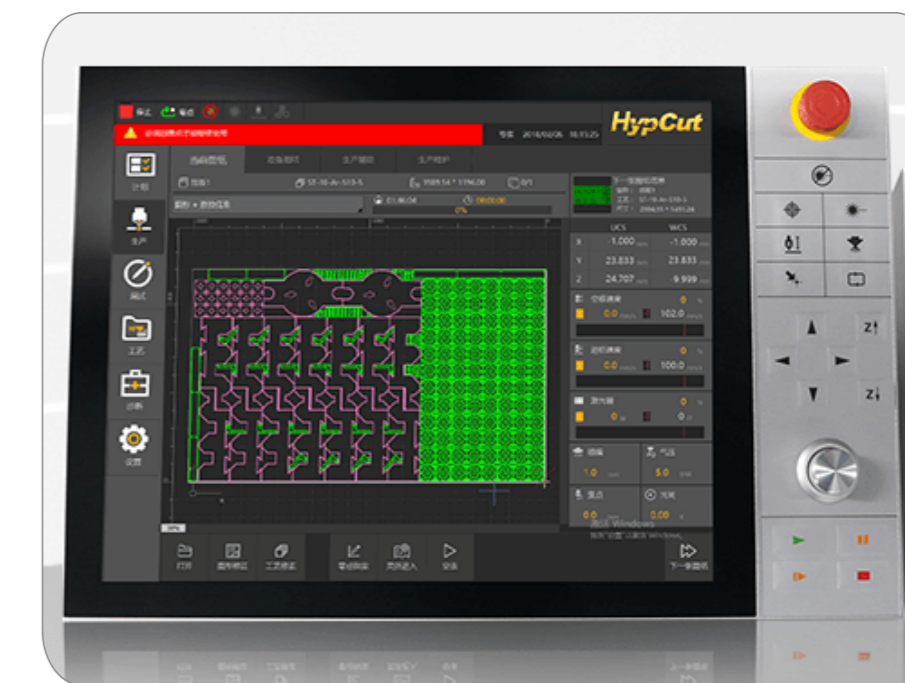


Enrich Plate Processing Technology Library

- **Touch screen operation:** high-end Touch operation interface.
- **Visual material reproduction:** visual recognizing device focus on the position of the plate to realize super-efficient recycling of surplus material.
- **Intelligent anti-collision protection:** dual-drive balance real-time calibration, air-moving obstacle avoidance, biometric collision avoidance, etc.
- **Convenient functions:** provide one-key cut-off, automatic edge finding, automatic calibration, intelligent focus test, air pressure calibration, etc.
- **Various perforation processes:** non-inductive perforation, lightning perforation, multi-level perforation, lead strategy, perforation slag removal, etc.
- **High-quality cutting:** flying cutting, air cutting, bright surface cutting, smart leapfrog, etc.

New Cnc Laser Bus Control Software

New CNC laser bus control software We use the latest highest-end bus-type dedicated CNC laser cutting software. It is divided into 7 modules, which are making plan, production, debugging, technology, diagnosis, maintenance, and setting etc, aiming at providing modular, personalized, automated, and informatized solutions. It can be smart compatible to the MESS data management system to achieve Industry 4.0.



MEDIUM POWER



- Full protective enclosed design provide safty protection aviod laser radiation and mechanical movement.
- Exchange tables save material loading time.

Technical Parameters

Model type	GF1530JH/GF1540JH/GF1560JH/GF2040JH/GF2060JH
Cutting area	1500mm*3000mm;1500mm*4000mm;1500mm*6000mm; 2000mm*4000mm;2000mm*6000mm;
Laser power	1500W-3000W/4000W-8000W
Acceleration speed	120m/min
Max idle speed	1.2g
Position accuracy	0.05mm
Repeat position accuracy	0.03mm



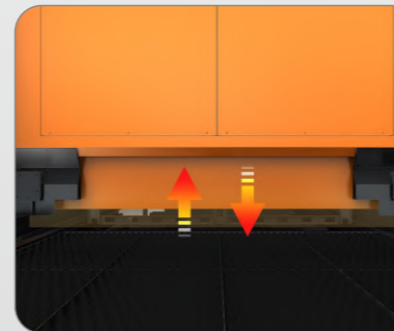
Samples



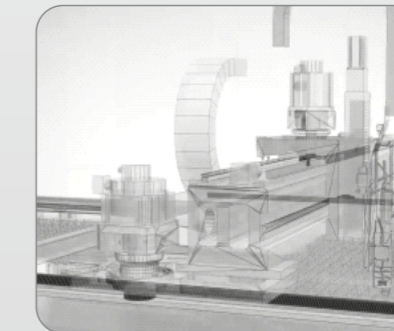
01
The HD monitoring window allows the operator to take into account both cutting and operation interface, real-time dynamic monitoring of the whole process.



02
Durable Compressive Aviation aluminum beam in good dynamic performance ensures high accelerating speed.



03
A fully enclosed design avoids laser radiation or mechanical movement and improves personal safety protection.



04
The high damping bed with Gantry double- drive structure is good rigidity, faster speed and acceleration speed.

GF25120/GF35120

Ground rail large format fiber laser cutting machine

Technical Parameters

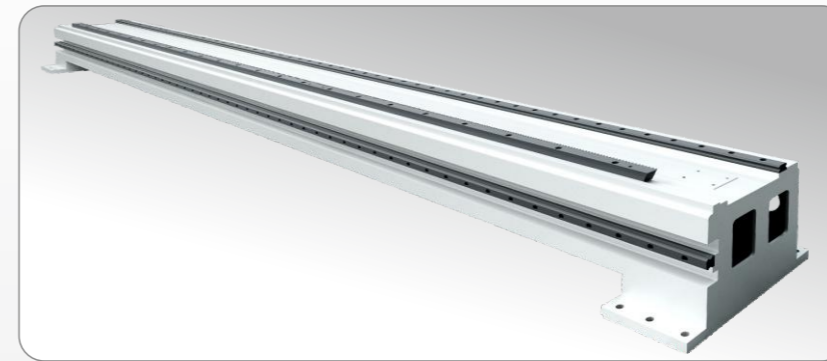
Laser power	6000W-30000W
Maximum idling speed	80m/min
Maximum acceleration	0.8g
Positioning accuracy	0.1mm/10m
Repetitive positioning accuracy	0.05/10m
Maximum groove angle	± 45°



overall description of the equipment

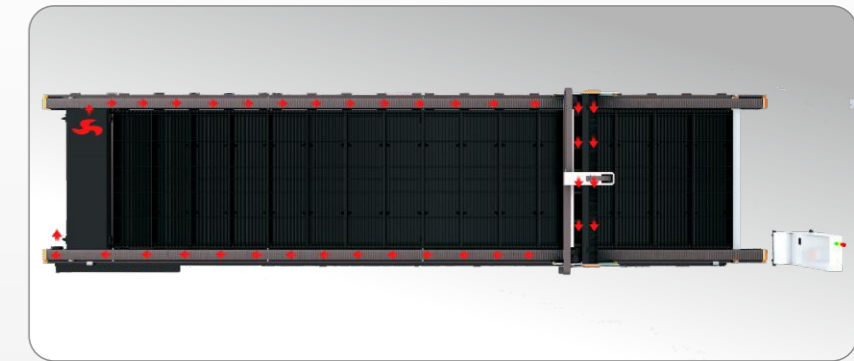
- ✔ Ground rail type large format fiber laser cutting machine, with large format and strong load bearing, can be used for one-time processing and molding of oversized plates.
- ✔ The overall design adopts a ground rail type modular design, and the length and width can be customized at will. After the entire machine is disassembled, it can be shipped in standard containers.
- ✔ Can be equipped with groove components to achieve a maximum of 45° groove cutting, V-shaped, X-shaped, Y-shaped groove and other different types of groove one-time molding, can greatly improve the efficiency of sheet metal processing.

Machine Details



Lightweight aluminum beam

Good dynamic performance, compression resistant design, not easy to deform after long-term use, dedicated mold aluminum alloy material molding process, structural integration, high strength, and more durable.



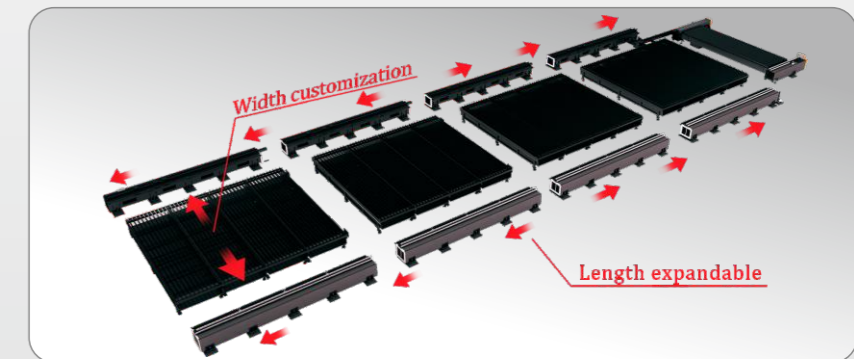
Time sharing and zoning ventilation

The place where the cutting head moves to begins to draw air; It adopts right blowing and left extracting, and is equipped with a large air volume blower on the right side. Together with a large suction blower on the left side, it creates a good working environment for you.



Segmented modular workbench

Convenient disassembly and replacement without hindering production; Modular blade assembly makes slag removal more convenient and labor saving.



Modular design

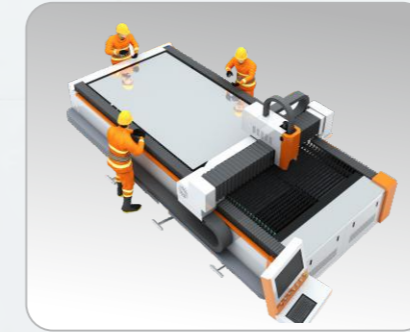
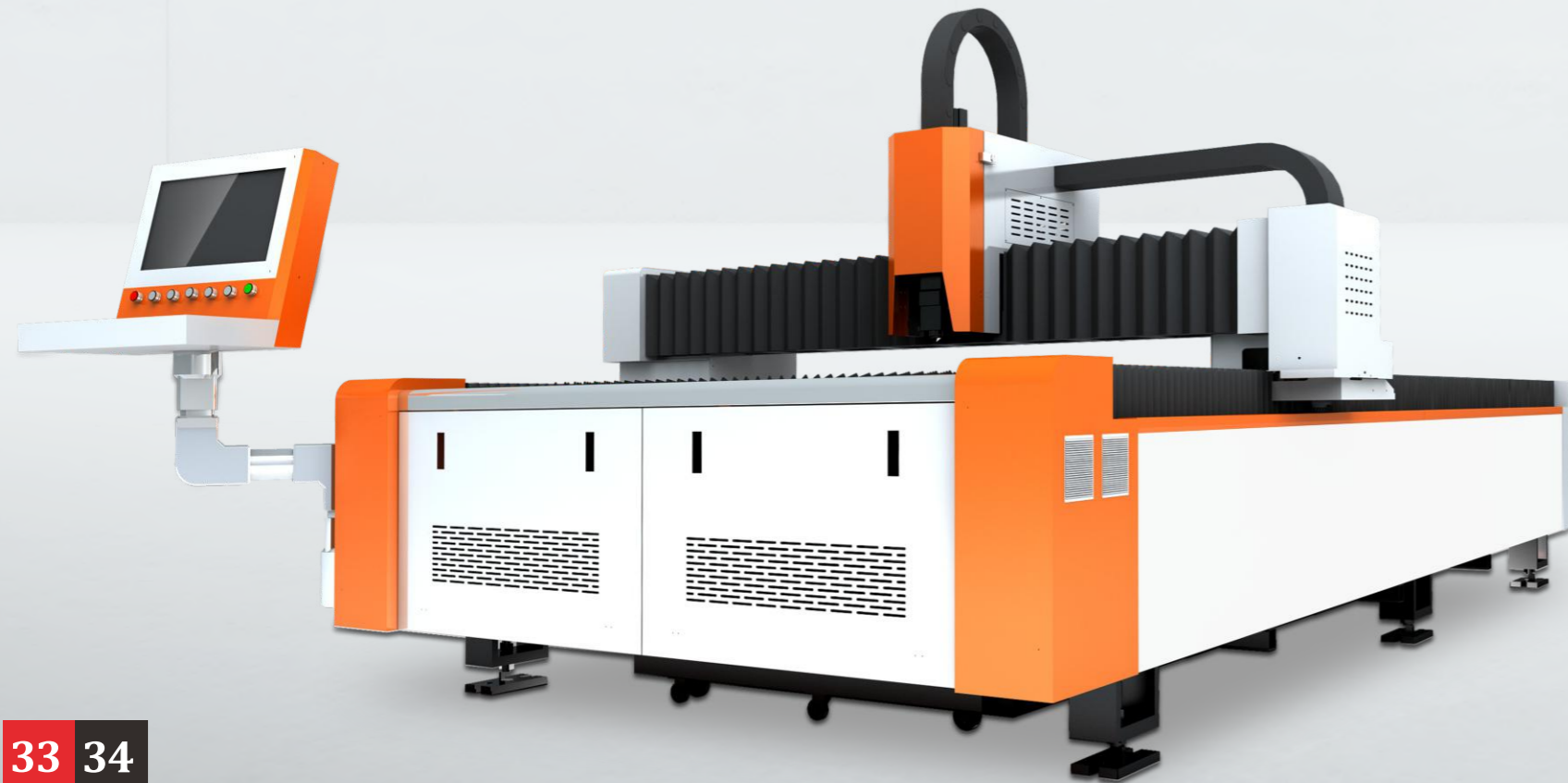
The length and width can be customized to suit the processing of oversized and ultra-thick plates; The separation design between the workbench and the bed ensures that the heat generated by cutting does not affect the bed, ensuring high-speed and high-precision operation of the machine tool.

GF1530

OPEN TYPE FIBER LASER

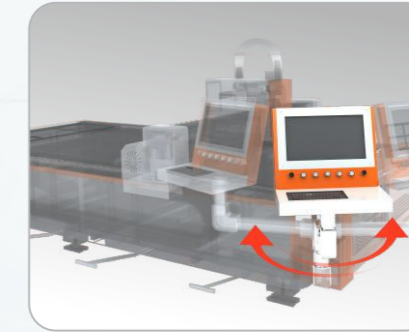
Technical Parameters

Model type	GF1530/GF1540/GF1560/GF2040/GF2060
Cutting Area	1500mm*3000mm;1500mm*4000mm;1500mm*6000mm; 2000mm*4000mm;2000mm*6000mm;
Laser power	1500W/2000W/3000W/4000W/6000W
Max idle speed	80m/min
Acceleration speed	0.8g
Position accuracy	0.05mm
Repeat accuracy	0.03mm



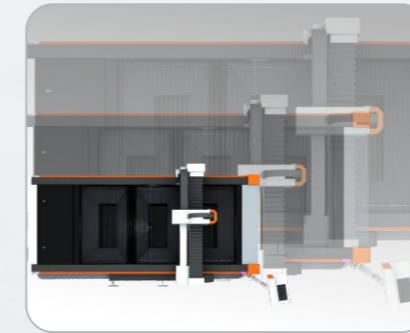
01

Open compact table requires a small footprint, easy to load and unload flat sheets.



02

Rotary operation table is convenient and friendly in operation.



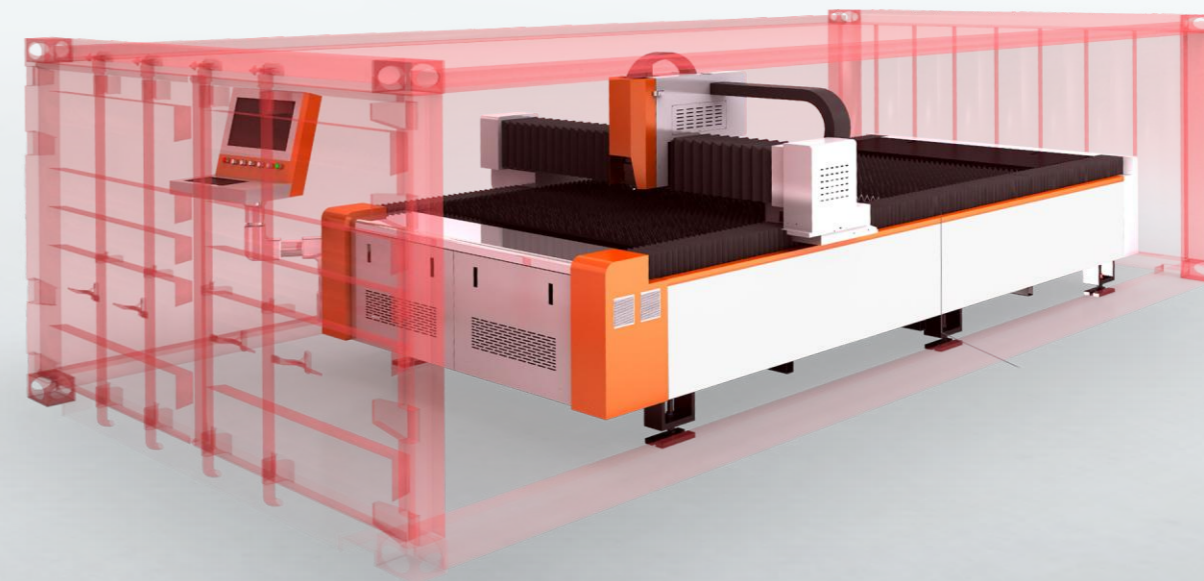
03

Vairous models meet customer processing needs.



04

Plug-and-play, Starting-up within 1 hour after landing, completely minimize the customer's on-site installation work simply.



05

The whole machine can be loaded or transported without disassembly parts, which simplifies the equipment loading work.

GF1510

MEDIUM FORMAT FIBER LASER CUTTING MACHINE



CE European Standard

Smart flat-panel cutting equipment specially designed for European and American customers.

Small, beautiful, precise, professional and strong!

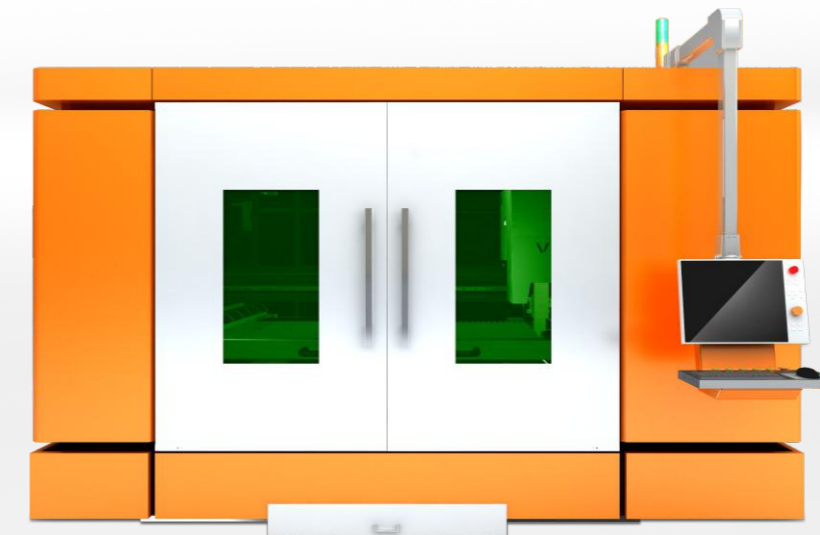


Technical Parameters

Model type	GF1510/GF2010/GF3015
Cutting Area	1500mm*1000mm; 2000mm*1000mm; 3000mm*1500mm
Laser Power	1500W/2000W/3000W/4000W
Max idle speed	80m/min
Acceleration speed	0.8g
Position Accuracy	0.05mm
Repeat position accuracy	0.03mm

Applicable Materials

Stainless steel , mild steel , galvanized steel , aluminum ,brass and other metal materials.



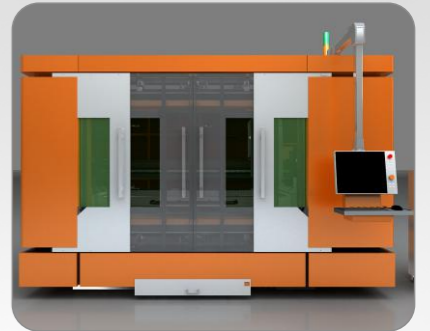
01

HYP CUT8000 bus control software, New Touch Screen, support MESS, perfect realization of Industry 4.0.



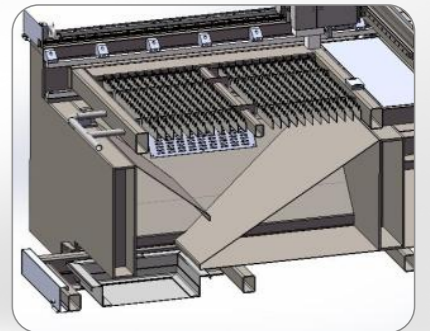
02

The sliding plug door design is the same as that of high-speed trains, which has high sealing performance and does not take up space.



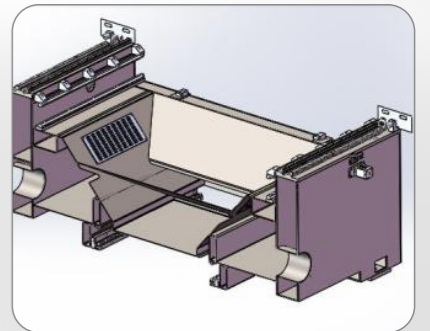
03

Funnel feeding reduces laser radiation, away from the light source.



04

With bilateral ventilation, dust removal effect is more refined.



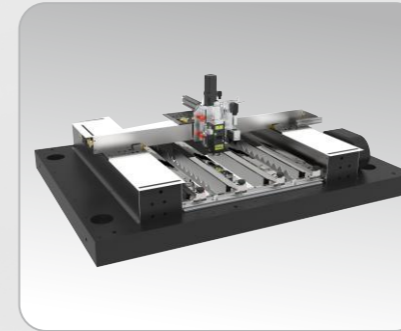
GF6060

SMALL SIZE FIBER LASER



Technical Parameters

Model type	GF6060S/GF6060
Cutting area	600mm*600mm
Laser power	1500W/2000W/3000W
Max moving speed	60m/min
Drive type	Liner Motor /servo motor
Position accuracy	0.01mm
Repeat position accuracy	0.004mm
Max acceleration speed	1.4g/0.8g



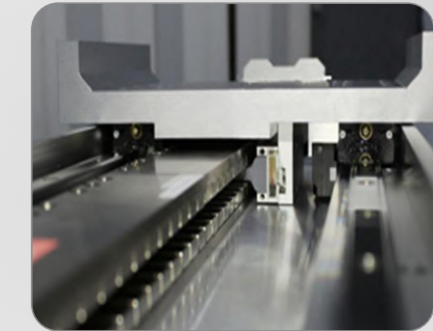
01

Enclosed design meets CE standard. The machine body adopts marble base in good rigidity and high density. Through digital control gantry milling machine precision processing, this machine achieves accurate movement.



02

EtherCATBus high-end CNC system. AheadTechs greatly improves the machine flexibility and expandability, and it facilitates with connection with other devices.



03

Liner guide motor is good at fast speed. Full closed loop feedback ensures high accuracy.

Samples



OPEN TYPE

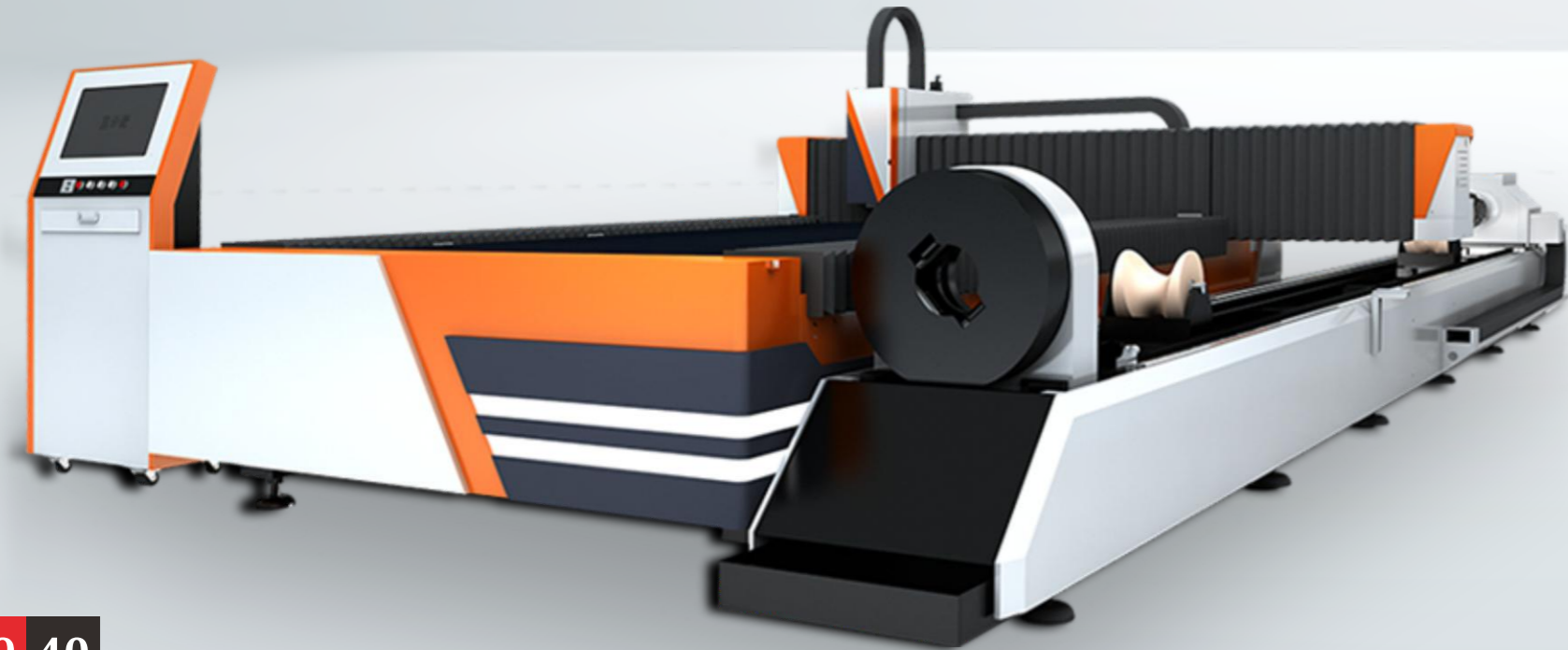
DUAL FUNCTION SHEET & TUBE LASER CUTTING MACHINE

Main Features

- ✔ Open single table for easy loading and unloading
- ✔ The combined machine provides plate and pipe dual cutting functions
- ✔ Double-driving system inspire fast speed

Technical Parameters

Model type	GF1530T/GF1540T/GF1560T/GF2040T/GF2060T
Cutting area	1500mm*3000mm;1500mm*4000mm; 1500mm*6000mm;2000mm*4000mm; 2000mm*6000mm;
Tube length	3m/6m
Laser power	1500W/2000W/3000W/4000W
Max moving speed	80m/min
Max acceleration speed	0.8g
Position accuracy	0.03mm



CLOSED TYPE

DUAL FUNCTION SHEET & TUBE LASER CUTTING MACHINE

- ✔ This is the high cost-effective laser equipment, which meets both plate and pipe cutting functions
- ✔ The fully enclosed design avoid laser radiation or mechanical movement damage and improve personal safety protection

Technical Parameters

Model type	GF1530JHT/GF1540JHT/GF2040JHT/GF2060JHT
Cutting apread	1500mm*3000mm;1500mm*4000mm; 2000mm*4000mm;2000mm*6000mm;
Tube length	3m/6m
Laser power	1500W/2000W/3000W/4000W/6000W/8000W
Max Idle speed	100m/min
Max acceleration speed	1.2g
Position accuracy	0.03mm

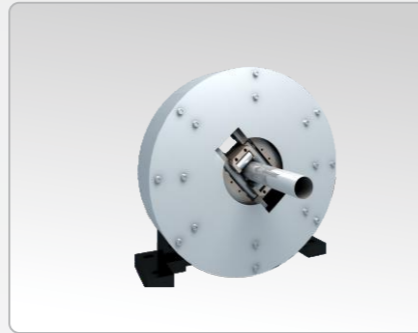
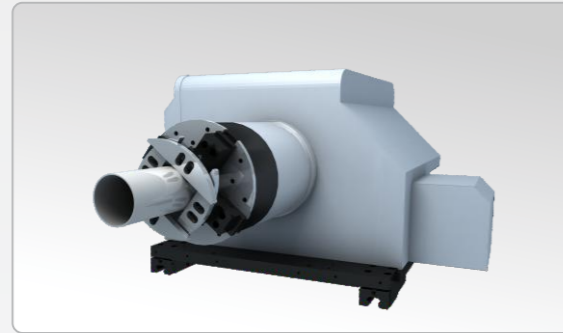


CLOSED TYPE

DUAL FUNCTION SHEET & TUBE LASER

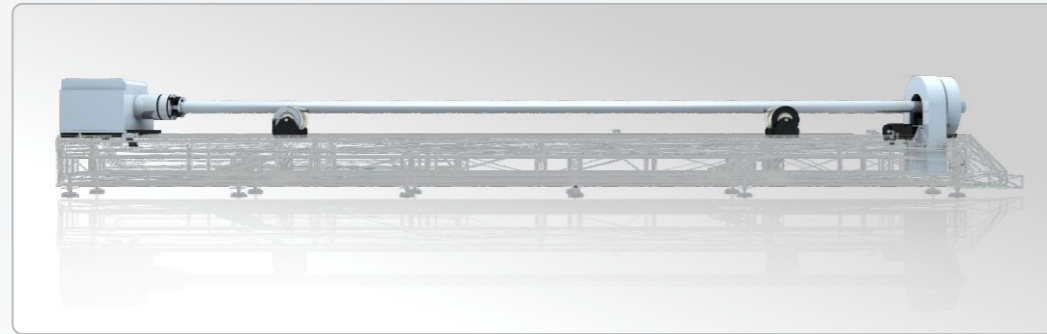
01

Full- stroke pneumatic chuck could achieve one key to complete pipe clamping and self- centering, without manual adjustment.



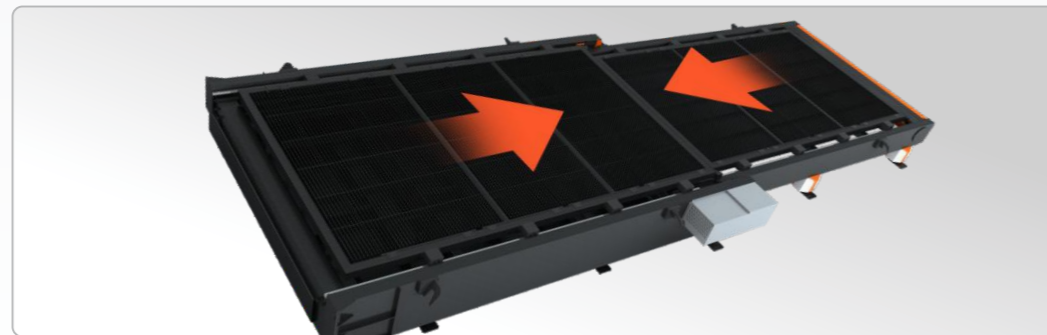
02

There are two variable diameter supporting wheels used to dynamically support the 6M long pipe and maintain the clamping level to ensure the cutting accuracy.



03

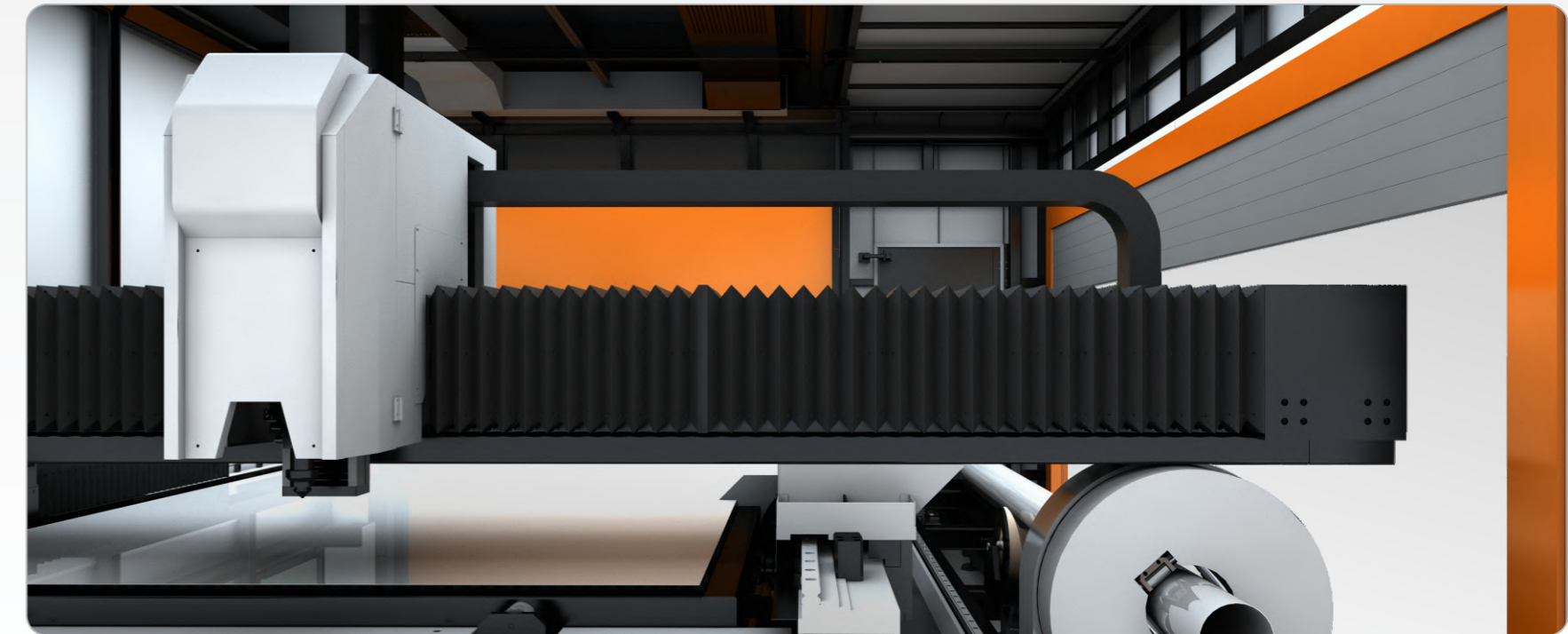
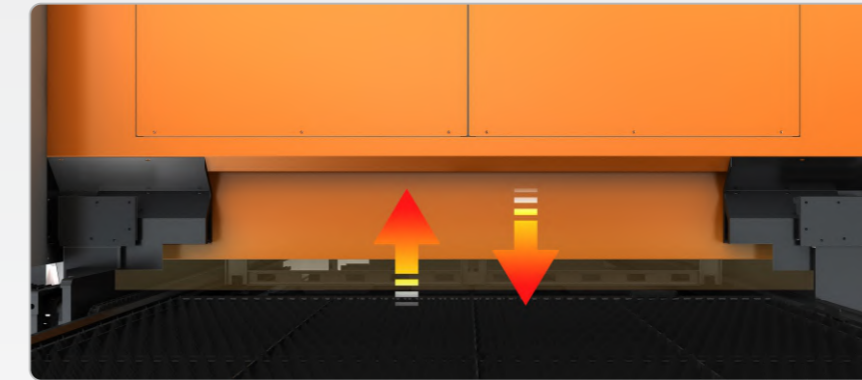
With high power driving motor, the working table can realize smooth and efficient exchange under the condition of heavy load, with high synchronization of interchange.



Machine Details

04

While taking into account the convenient loading and unloading of the tube sheet, the fully enclosed design is adopted to avoid laser radiation or mechanical movement damage and improve personal safety protection.



Technical parameter of sheet metal fiber laser machinery series

Note	Technical parameter item	High power fiber laser cutting machine	Medium fiber laser cutting machine	Ground rail large format fiber laser cutting machine
1	Model type	GF1530JH/GF2040JH/GF2060JH/ GF2560JH/GF2580JH	GF1530JH/GF1540JH/GF1560JH/ GF2040JH/GF2060JH	GF25120/GF30120/GF35120
2	Cutting area	1500mm*3000mm 2000mm*4000mm 2000mm*6000mm 2500mm*6000mm 2500mm*8000mm	1500mm*3000mm 1500mm*4000mm 1500mm*6000mm 2000mm*4000mm 2000mm*6000mm	2500mm*12000mm 3000mm*12000mm 3500mm*12000mm Other formats can be customized
3	X Y axis max idle speed	160m/min	120m/min	80m/min
4	X Y axis max acceleration speed	2.0g	1.2g	0.8g
5	Position accuracy	0.05mm	0.05mm	0.1mm/10m
6	Repeat position accuracy	0.03mm	0.03mm	0.05mm/10m
7	Lubricating system	Auto lubricating system	Auto lubricating system	Auto lubricating system
8	Extraction system	Partition dust removal	Auto dust removal	Auto dust removal
9	Dust extraction system	Professional laser dust extraction filter (optional)	Professional laser dust extraction filter (optional)	Professional laser dust extraction filter (optional)
10	Control software	FSCUT8000	FSCUT2000E/FSCUT4000E	FSCUT8000
11	Laser power	10000W-30000W	1500W-3000W/4000W-8000W	6000W -30000W
12	Laser generator	IPG/MAX/Raycus	IPG/MAX/Raycus	IPG/MAX/Raycus
13	Fiber laser cutting head	Boci/Precitec/Raytools	Raytools	Boci/Precitec/Raytools
14	Servo motor	Yaskawa bus servo motor	Yaskawa bus servo motor	Yaskawa bus servo motor
15	Reducer	Desbore	Desbore	Desbore
16	Rack and pinion	Taiwan YYC/KH	Taiwan YYC/KH	Taiwan YYC/KH
17	Guide rail	HIWIN	HIWIN	HIWIN
18	Chiller	Water chiller	Water chiller	Water chiller
19	Exchanging tables	Paralleled exchanging type	Paralleled exchanging type	Large format working table
20	Electrical supply	AC 380V 50/60Hz	AC 380V 50/60Hz	AC 380V 50/60Hz
21	Gas circuit configuration	Professional three gas integrated oneproportional valve	SMC proportional valve	Professional three gas integrated oneproportional valve

Note	Technical parameter item	Open fiber laser cutting machine	Medium-power fiber laser cutting machine	Small Size fiber laser cutting machine
1	Model type	GF1530/GF1540/GF1560/GF2040/GF2060	GF1510/GF2010/GF3015	GF6060S/GF6060
2	Cutting area	1500mm*3000mm 1500mm*4000mm 1500mm*6000mm 2000mm*4000mm 2000mm*6000mm	1500mm*1000mm 2000mm*1000mm 3000mm*1500mm	600mm*600mm
3	X Y axis max idle speed	80m/min	80m/min	60m/min
4	X Y axis max acceleration speed	0.8g	0.8g	1.4g/0.8g
5	Position accuracy	0.05mm	0.05mm	0.01mm
6	Repeat position accuracy	0.03mm	0.03mm	0.004mm
7	Lubricating system	Auto lubricating system	Auto lubricating system	Auto lubricating system
8	Extraction system	Auto dust removal	Auto dust removal	Auto dust removal
9	Dust extraction system	Professional laser dust Extraction filter(optional)	Professional Laser Dust extraction filter (optional)	Professional laser dust Extraction filter(optional)
10	Control software	FSCUT2000	FSCUT8000	FSCUT2000/AheadTechs
11	Laser power	1500W-6000W	1500W-4000W	1500W-3000W
12	Laser generator	IPG/MAX/Raycus	IPG/MAX/Raycus	IPG/MAX/Raycus
13	Fiber laser cutting head	Raytools	Raytools	Raytools
14	Servo motor	Yaskawa bus servo motor	Yaskawa bus servo motor	Raytools(linear motor)
15	Reducer	Desbore	Desbore	/
16	Rack and pinion	Taiwan YYC/KH	Taiwan YYC/KH	/
17	Guide rail	HIWIN	HIWIN	HIWIN
18	Chiller	Water chiller	Water chiller	Water chiller
19	Exchanging tables	/	/	/
20	Electrical supply	AC 380V 50/60Hz	AC 380V 50/60Hz	AC 380V 50/60Hz
21	Gas circuit configuration	SMC proportional valve	SMC proportional valve	SMC proportional valve

3D ROBOT LASER

3D ROBOT CUTTING

Applications

Automotive sheet metal,shaped tube and parts, internal high-pressure tubes, thermoformed tubes, household appliances and bathroom, advertising lighting.

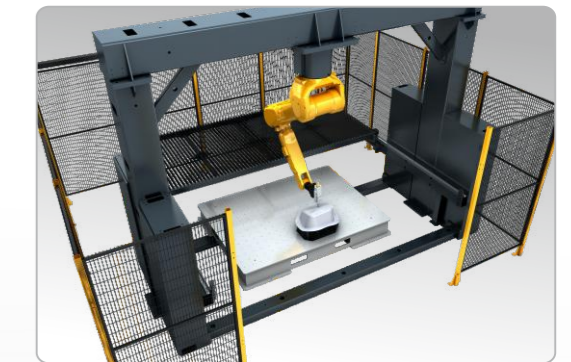
Samples



Configuration And Parameters

Robot brand	FANUC	FANUC	ABB	KUKA	Staubli
Type	M20iB	M800	IRB2600	KR20 R1810	RX160L
Loader	25kg	60kg	12kg	20kg	28kg
Working radius	1850mm	2040mm	1850mm	1810mm	2010mm
Installation type	Formal, upside-down, angle	Formal	Formal, upside-down, angle	Formal, upside-down, angle	Formal, upside-down
process accuracy	±0.15mm	±0.1mm	±0.2mm	±0.2mm	±0.15mm
Repeatability	±0.02mm	±0.015mm	±0.04mm	±0.04mm	±0.05mm
Kaser power	1000W-6000W	1000W-150000W	1000W-3000W	1000W-6000W	1000W-6000W
Optional	Walking axis, positioner, offline programming software, protective fence, gantry, plate cutting table, dust collector..				

Machine Details



01 Realize a wide range of flexible processing, a variety of protection options, can be isolate the robot working area to ensure the safety of workers.

02 A variety of installation methods such as formal/inverted/angle to meet the needs of different customers.

03 3D and 2D application, optional gantry can be equipped with a 2-D cutting platform, can achieve 3-D cutting and plate cutting functions on the same equipment.

3D ROBOT LASER

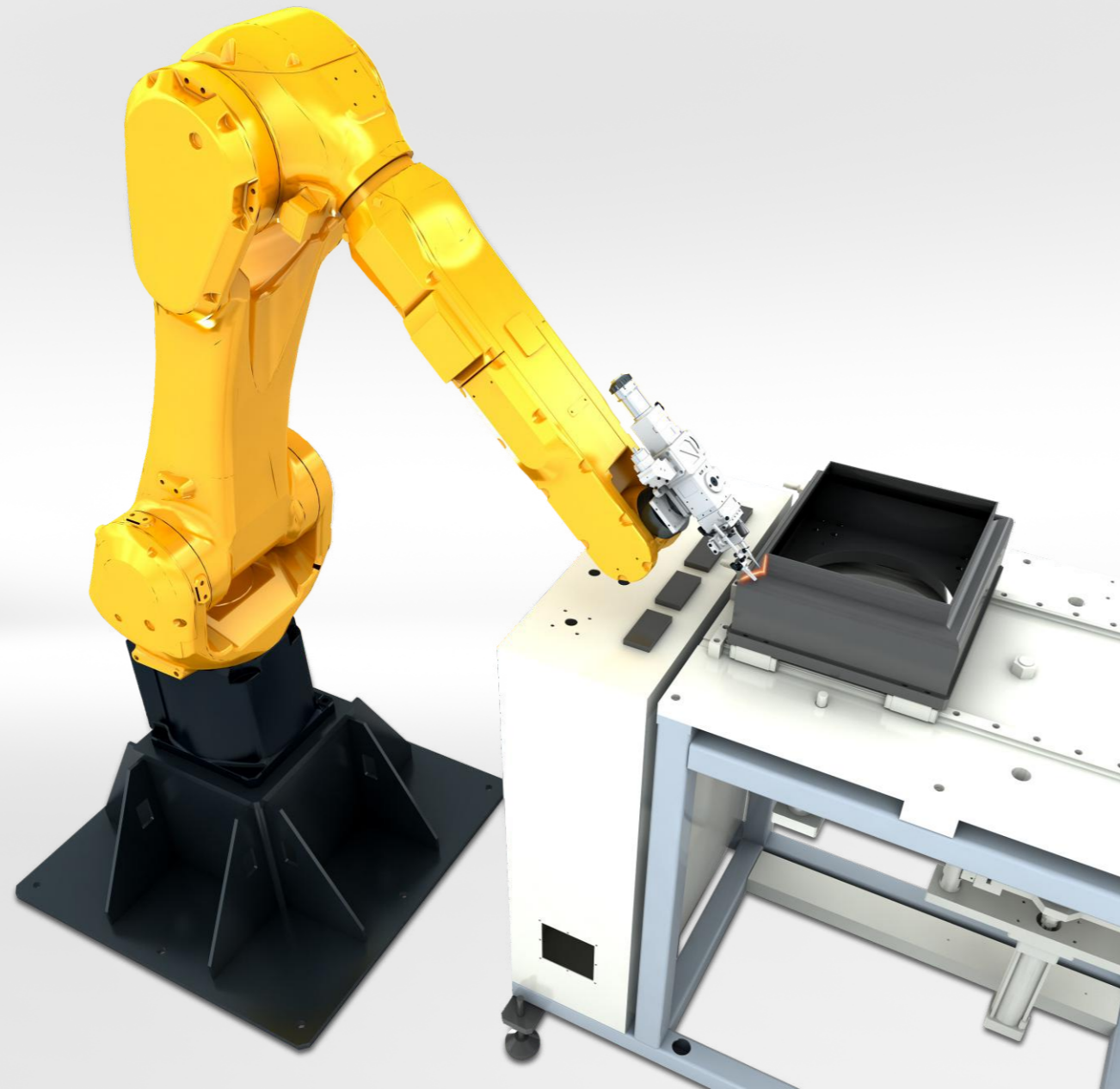
3D ROBOT WELDING

Suitable Materials

Mild steel, stainless steel, aluminium, GI sheet...

Applications

Automobile field, kitchenware and bathroom, medical equipment, electronic components, etc.



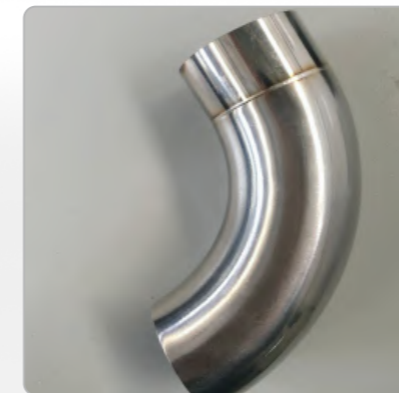
Configuration And Parameters

Robot brand	FANUC	FANUC	YASKAWA	ABB	KUKA
Type	R2000iC	M20iB	Gp25	IRB2600	KR20 R1810
Loader	165kg	25kg	25kg	12kg	20kg
Working radius	2655mm	1850mm	1730mm	1850mm	1810mm
Installation type	Formal, upside- down, angle	Formal, upside- down, angle	Formal	Formal, upside- down, angle	Formal, upside- down, angle
Processing accuracy	±0.2mm	±0.15mm	±0.1mm	±0.2mm	±0.2mm
Repeatability	±0.05mm	±0.02mm	±0.02mm	±0.04mm	±0.04mm
Laser power	1000W- 2000W	1000W- 6000W	1000W-6000W	1000W- 3000W	1000W- 6000W
Optional	walking axis, positioner, offline programme software, protective fence, gantry, dust collector, swing head, vibrating lens, etc.				

Product Details

- ✔ Advanced high-precision robots have a wide range of motion, low failure rate and easy maintenance.
- ✔ The flexible processing system adopts PLC control to facilitate the management of multiple processing procedures and fixtures.
- ✔ The equipment is equipped with bus communication options and equipped with gas pressure sensors to avoid rapid damage to consumables.
- ✔ Optional walking axis, gantry, base or positioner to expand the processing range of a single robot.
- ✔ It can be equipped with standard/swing/galvanometer welding head, welding seam tracking/detection system, wire feeder, coaxial/paraxial air blowing, etc.
- ✔ Laser welding speed is 5- 10 times faster than traditional welding machine.

Samples



HANDHELD

THREE-IN-ONE LASER HANDHELD WELDING MACHINE

The handheld fiber laserwelding machine consists of an integrated cabinet, fiber laser, cooling water circulation system, laser control system and handheld welding head. Hand- held welding machine equipped with wire feeder can tolerate larger assembly gaps and errors, and improve work efficiency and weld strength.

Applications

This product is widely used in kitchenware, kitchen and bathroom, household appliances, molds, stainless steel products, door and window furniture, handicrafts, auto parts,etc.



Samples



Configuration And Parameters

Type	MW1500	MW2000
Laser power	1500W	2000W
Laser mode	Continuous\Pulse	
Laser wavelength	1064NM	
Beam quality	M2<1.2	M2<1.5
Laser swing range	0-5mm	
Output power stability	±2%	±2%
Power requirements	220V±10%, single phase	
Whole power consumption	≤9KW	≤12KW
Cooling system	Customized industrial-grade dual-temperature dual-control chiller	
Fiber cable length	10M customized	
Working environment temperature range	15~35°C	
Working environment humidity	< 70% without condensation	
Welding thickness	MAX3mm	MAX5mm
Suitable materials	Stainless steel, carbon steel, aluminum, galvanized sheet, copper,etc.	
Welding seam requiremets	<0.2mm	
Welding speed	0~120mm/s	

Product Details

- ✓ Fast welding speed and high welding efficiency
- ✓ The welding is not deformed, the weld seam is beautiful, and no grinding is required after welding, which saves manpower
- ✓ The operation is simple, flexible and convenient, and you can directly operate it without professional welding knowledge.



GOLDEN LASER SERVICE

- ✔ Listen to the voice of customers
- ✔ Analyze customer's needs
- ✔ Solve customer's problems
- ✔ Improve machine application
- ✔ Reform industry status

01 Always pay attention to industry trends, focus on the market demand to develop products.

02 Communicate with Customers, provide excellent laser solution.

03 High-standard precision manufacturing, Guarantee to provide customers with high-quality products and solutions.

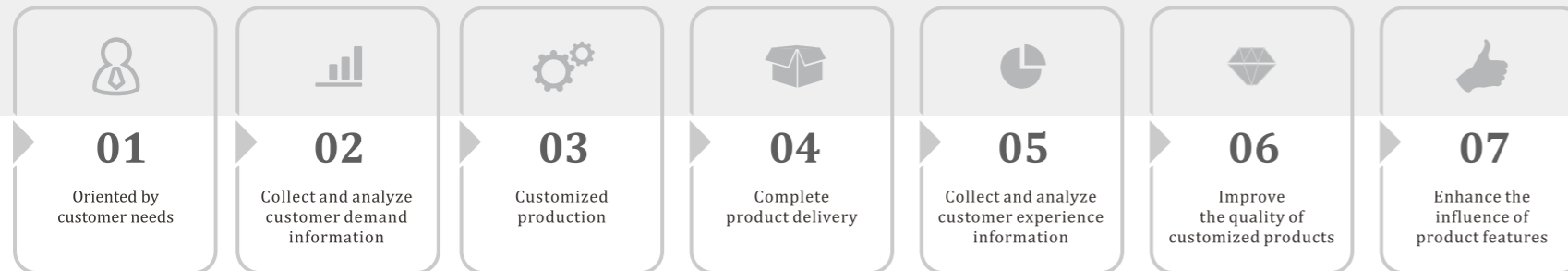
04 Complete the production, delivery, installation, and training services of the product within the specified time, so that customers will no worries in the whole process.

05 Communicate with users through after-sales and sales experts to extract useful information then to improving customer experience.

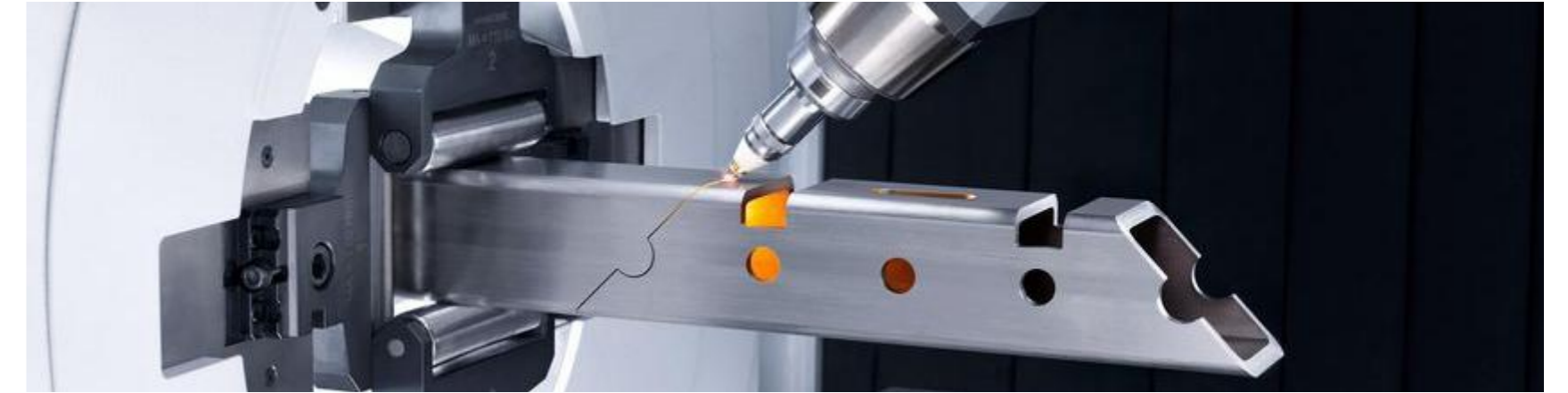
06 Improve product efficacy and functions by refining the experience information of users in the same industry.

07 Constantly focus on the improvement of equipment details Continuously improve the characteristics and advantages of products in the segmented market, make it beyond our client's expectations.

51 52



Golden Laser not only pursues excellent product quality, but also follows the service spirit of "Customer first, Sincere service", and adheres to the three high service standards of "High positioning, High quality, and High efficiency". The pre-sales, sales, and after-sales services run through the life of the product and strive to create more added value for customers, and therefore become the ideal brand chosen by our customers.



Pre-sale Service

Provide technical consultation: Golden Laser will respond promptly to all customers' inquiries, and provide customers with various production process plans, laser equipment technical consultation, sampling, equipment selection, technology and price consultation, and other services.

Provide comfortable inspection reception: We welcome customers to visit our company anytime, anywhere, and provide customers with catering, accommodation, and transportation convenience service.

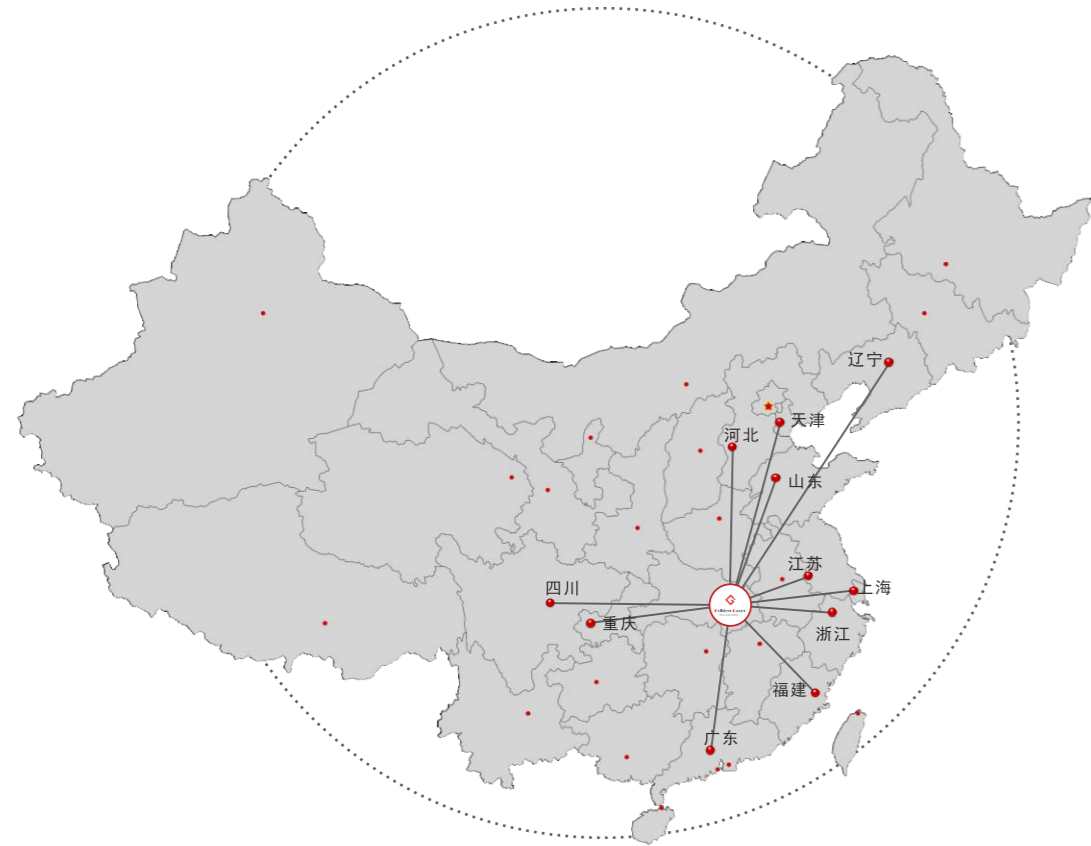
In-Sale Service

- Investigate the installation environment for the customer, and provide the equipment layout within 7 working days after the contract, to ensure the installation site is meet the equipment installation requirements
- We guarantee punctuality, quality, and quantity to strictly comply with the terms of the contract. Golden laser engineers will have a comprehensive operation and maintenance training for customers at the equipment installation and commissioning site. The training include:
 - Awareness of Laser safety protection; basic principles of lasers; equipment system composition; equipment operation and precautions
 - Daily maintenance of equipment, laser adjustment, and spare parts replacement operation skills
 - Use of equipment operating software and metal nesting software
 - Advanced cutting process and method
 - New materials process testing methods
 - Common hardware troubleshooting methods
- The installation and training time for the machine is no less than 7 working days until the customer can independently process and produce and master the measurement method of the new material cutting process.

GOLDEN LASER SALES NETWORKS



Global Service Hotline:
+86-27-6175-0109



After-Sale Service

We set up a 24-hour global after-sales service hotline: **400-9699-920** to respond to customer feedback in a timely

Golden Laser solemnly promises:

- One year free warranty for the whole equipment and lifetime maintenance
- We promise to solve customer's problems quickly, provide door to door service, and 24 hours online machine maintenance
- Customers can come to our company at any time for free technical training
- After the warranty period, we still provide extensive and favorable technician support and spare parts supply for our users
- Enjoy free software upgrade